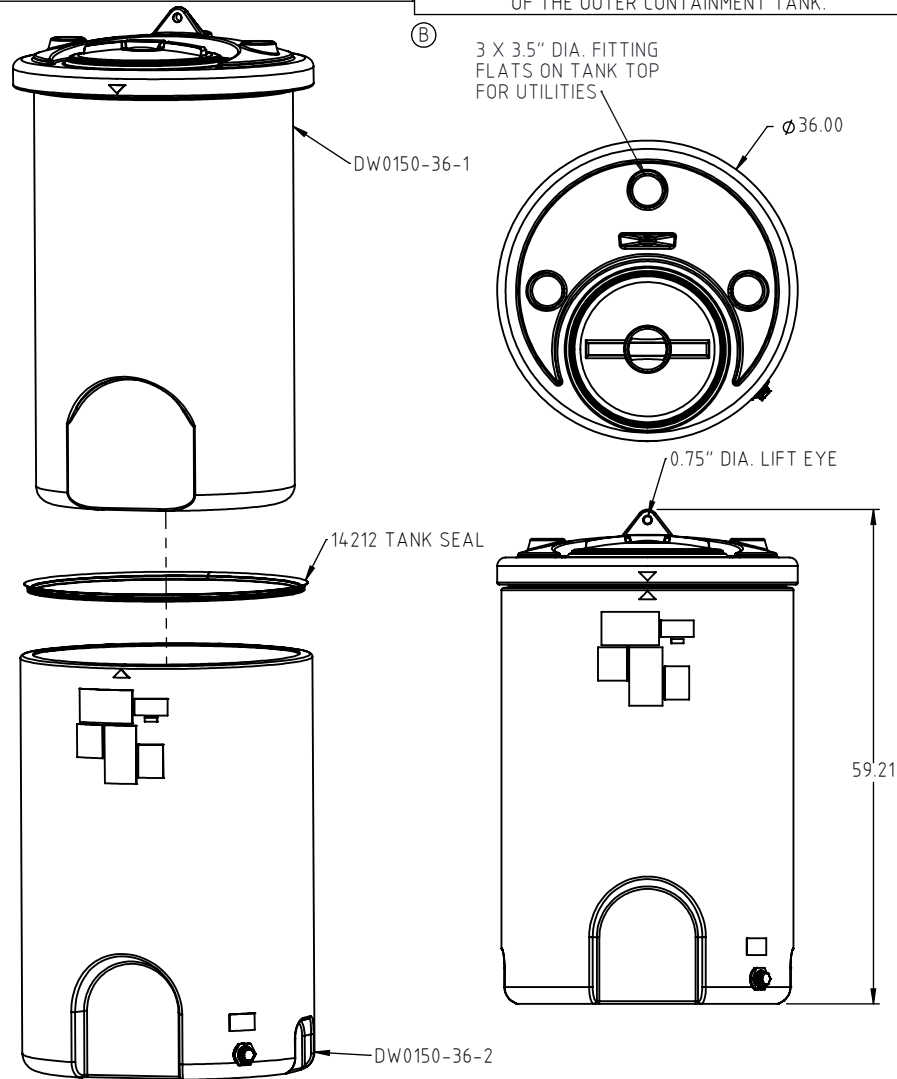


© DEN HARTOG INDUSTRIES, INC.

Copyright. All information furnished within this document, electronic file or design correspondence is the property of Den Hartog Industries, Inc. and shall not be used, disclosed to others or copied without the expressed written consent of Den Hartog Industries, Inc.

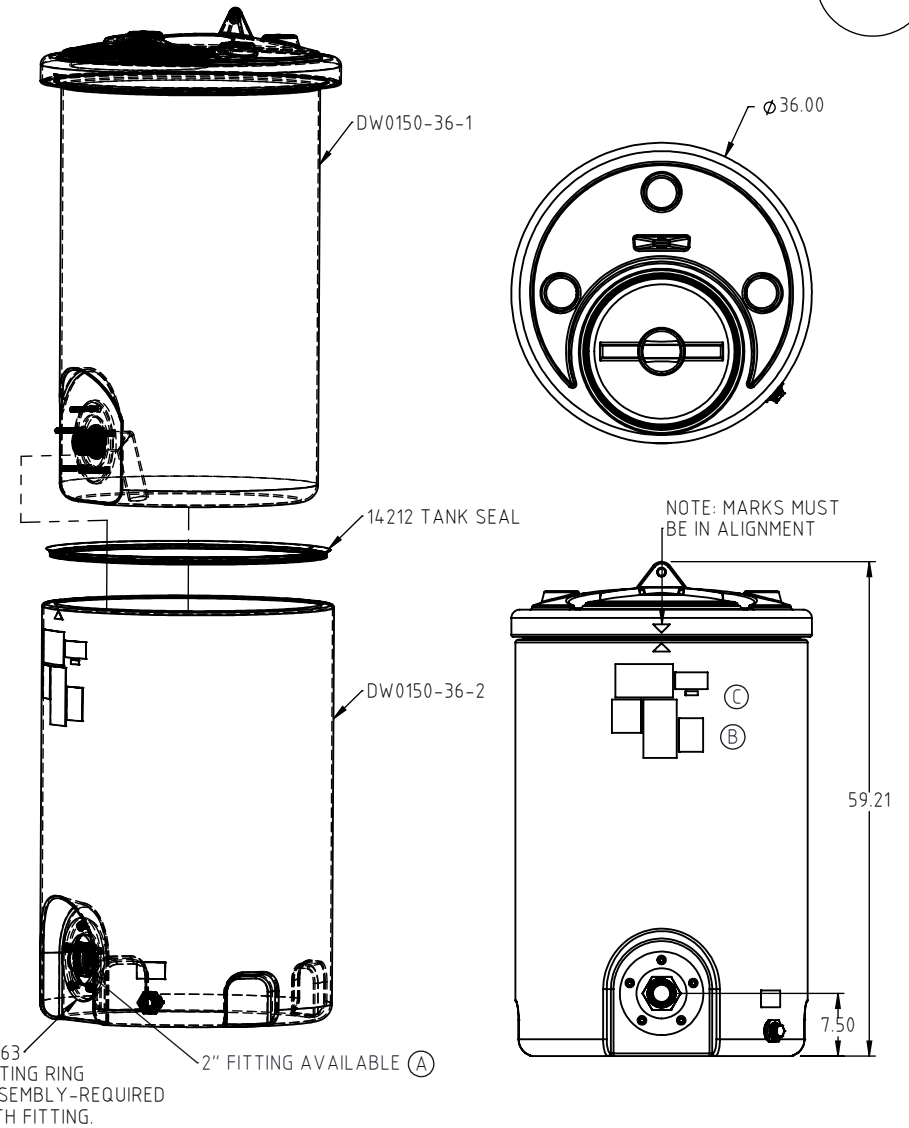
STANDARD TANK ASSEMBLY

IMPORTANT!
NEVER FILL ABOVE THE ADVERTISED CAPACITY OF TANK.
FAILURE TO HEED MAY EXCEED THE RATED CAPACITY
OF THE OUTER CONTAINMENT TANK.



TANK ASSEMBLY WITH OPTIONAL FITTING

DW0150-36



| | | | | | | |
|---|---------------------------------------|--|-----------|--------------------------|----------------|----------------|
| C | REMOVE 14234 LABEL AND NOTE | BES | 1/27/2023 | 4380 | DRAWN / DATE | MATERIAL : |
| B | NOTICE AND NSF LABEL ADDED | ADH | 2/15/18 | 3508 | ADH 8/28/2014 | SEE COMPONENTS |
| A | FITTING LISTED ON PRINT STANDARDIZED. | ADH | 10/15/15 | 3141 | APPRD. / DATE | |
| REV. | DESCRIPTION | BY | DATE | CCN | REH 10/17/2014 | |
| ALL DIMENSIONS ARE IN DECIMAL INCHES TOLERANCES UNLESS OTHERWISE SPECIFIED | | THIRD ANGLE PROJECTION ANSI 14.5M | | SHOT WEIGHT: | | NOTES: |
| POLYETHYLENE | | METAL | | SHIPPING WEIGHT: 99 LBS. | | |
| ±1% @ 68°F | | DECIMAL ± .125" FRACTION ± 1/4" ANGLE ± 1° | | FINISH: | | |



**Den Hartog
INDUSTRIES, INC.**

Ace Roto-Mold • Injection Molding • Blow Molding • Sowjoy
4010 HOSPERS DRIVE S. BOX 425, HOSPERS, IOWA 51238-0425

| | | |
|---|-----------------------|-----------------|
| DESCRIPTION 150 GALLON DUALLINE TANK - TANK ASSEMBLY | | |
| SCALE N.S. | PART NO. DW0150-36 | SHEET 1 OF 1 |