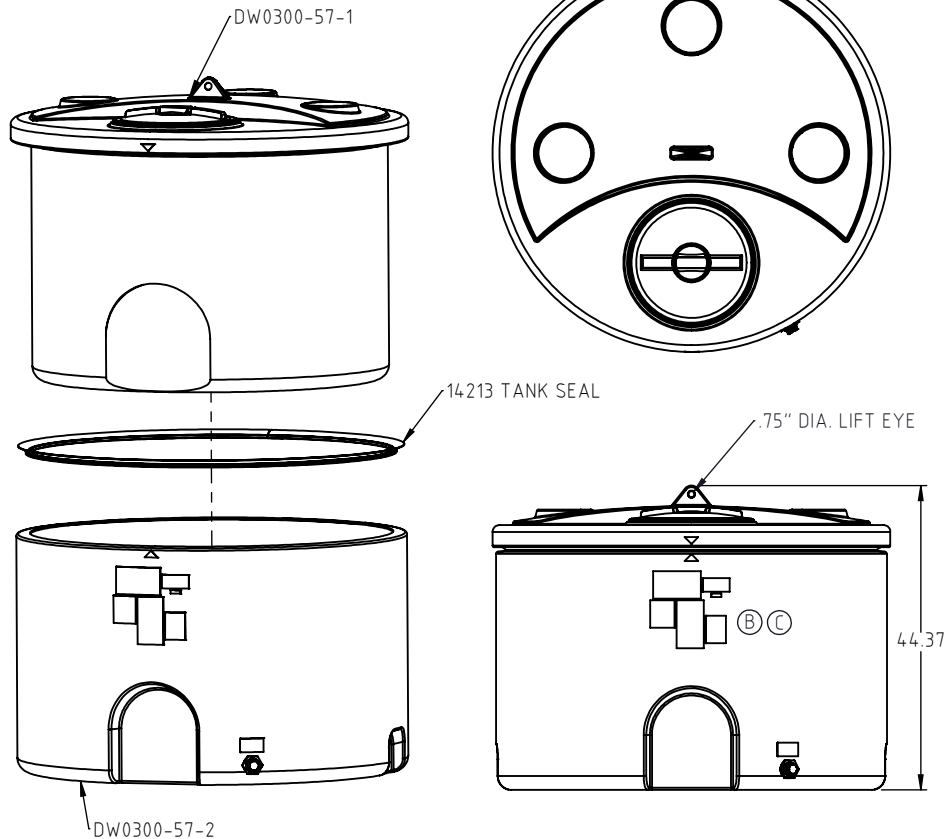


© DEN HARTOG INDUSTRIES, INC.

Copyright. All information furnished within this document, electronic file or design correspondence is the property of Den Hartog Industries, Inc. and shall not be used, disclosed to others or copied without the expressed written consent of Den Hartog Industries, Inc.

STANDARD TANK ASSEMBLY

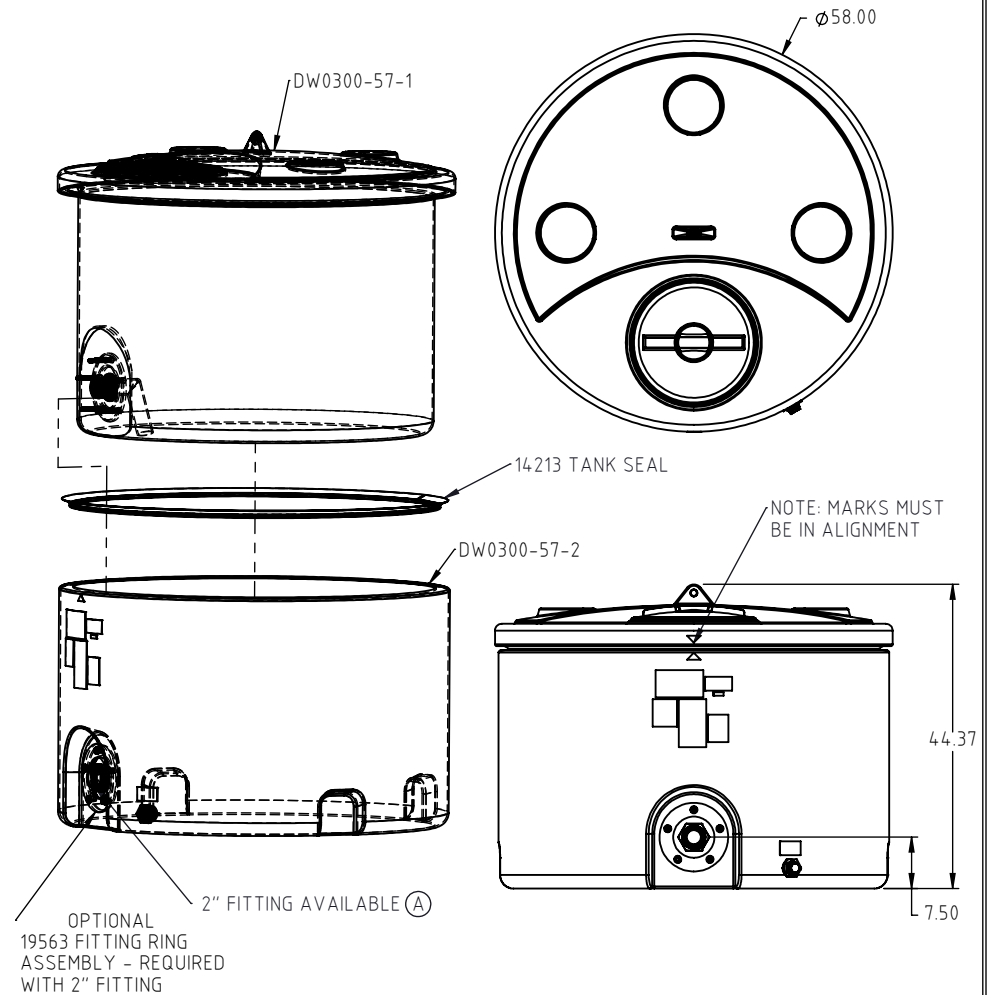
IMPORTANT!
NEVER FILL ABOVE THE ADVERTISED CAPACITY OF TANK.
FAILURE TO HEED MAY EXCEED THE RATED CAPACITY
OF THE OUTER CONTAINMENT TANK.



TANK ASSEMBLY WITH OPTIONAL 2" FITTING

DW0300-57

C



C	REMOVE 14234 LABEL AND NOTE	BES	1/27/2023	4380	DRAWN / DATE	MATERIAL :
B	NOTICE AND NSF LABEL ADDED	ADH	2/15/18	3508	ADH 8/7/2014	SEE COMPONENTS
A	FITTING LISTED ON PRINT STANDARDIZED.	ADH	10/15/15	3141	APPRD. / DATE	
REV.	DESCRIPTION	BY	DATE	CCN	REH 8/12/2014	
ALL DIMENSIONS ARE IN DECIMAL INCHES TOLERANCES UNLESS OTHERWISE SPECIFIED			THIRD ANGLE PROJECTION ANSI 14.5M		SHOT WEIGHT:	NOTES:
POLYETHYLENE			DECIMAL $\pm .125"$ FRACTION $\pm 1/4"$ ANGLE $\pm 1^\circ$		SHIPPING WEIGHT: 190 LBS.	
$\pm 1\%$ @ 68°F					FINISH:	



**Den Hartog
INDUSTRIES, INC.**

Ace Roto-Mold • Injection Molding • Blow Molding • Sowjoy
4010 HOSPERS DRIVE S. BOX 425, HOSPERS, IOWA 51238-0425

DESCRIPTION 300 GALLON DUALLINE TANK ASSEMBLY			
SCALE N.S.	PART NO. DW0300-57	SHEET 1 OF 1	