

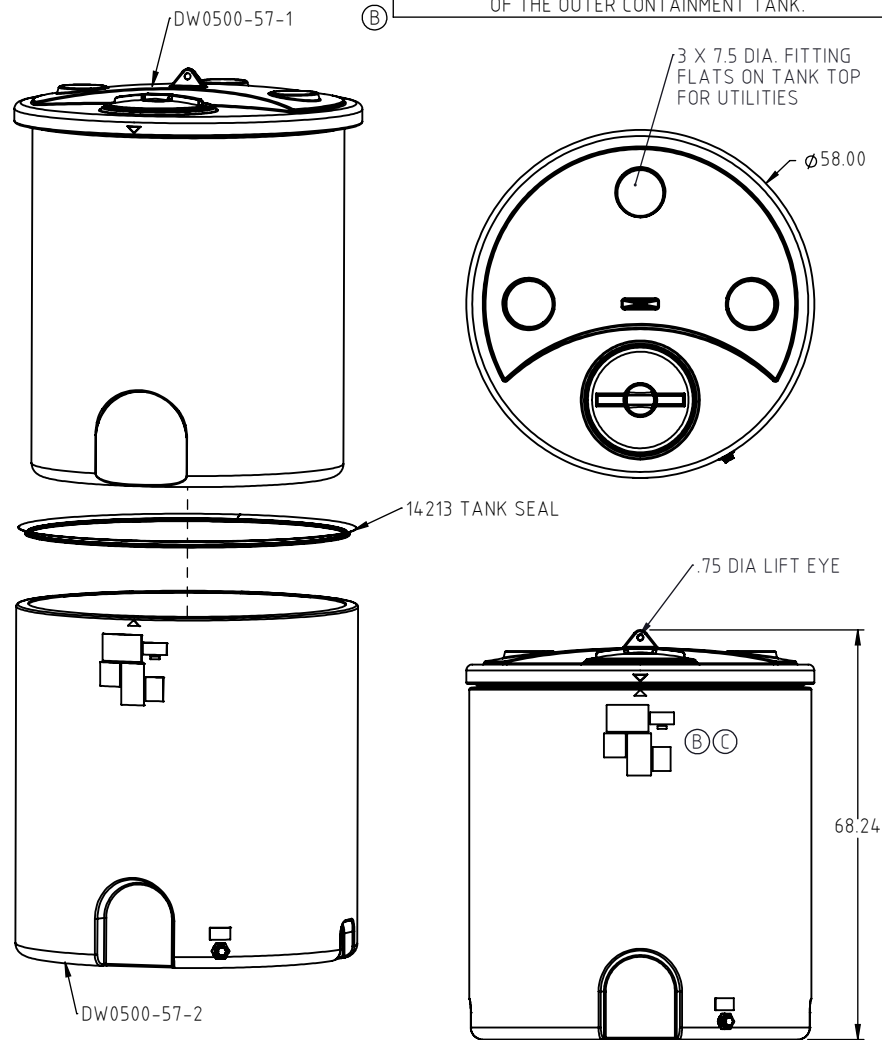
© DEN HARTOG INDUSTRIES, INC.

Copyright. All information furnished within this document, electronic file or design correspondence is the property of Den Hartog Industries, Inc. and shall not be used, disclosed to others or copied without the expressed written consent of Den Hartog Industries, Inc.

## STANDARD TANK ASSEMBLY

IMPORTANT!

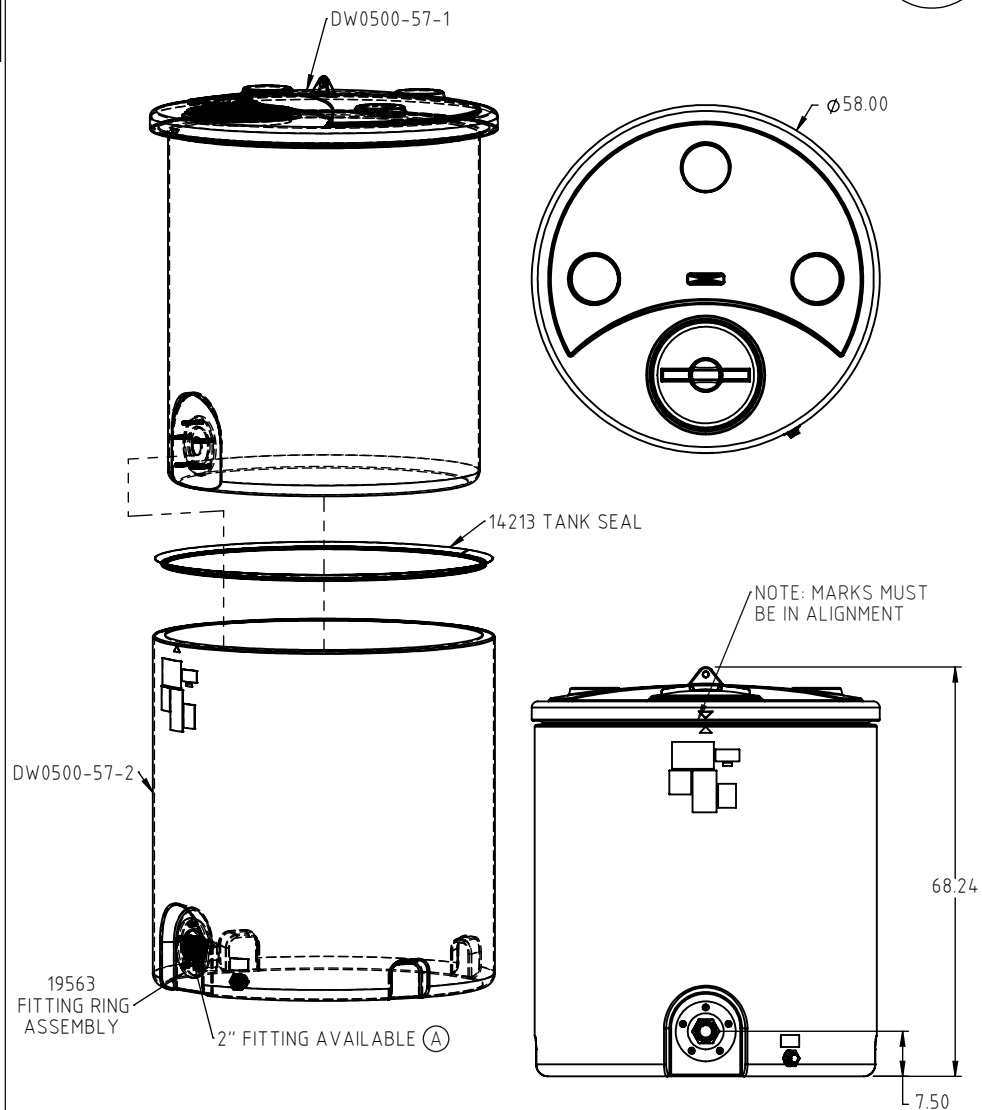
NEVER FILL ABOVE THE ADVERTISED CAPACITY OF TANK.  
FAILURE TO HEED MAY EXCEED THE RATED CAPACITY  
OF THE OUTER CONTAINMENT TANK.



## TANK ASSEMBLY WITH OPTIONAL 2" FITTING

DW0500-57

C



C	REMOVE 14234 LABEL AND NOTE	BES	1/27/2023	4380	DRAWN / DATE	MATERIAL :
B	NOTICE AND NSF LABEL ADDED	ADH	2/15/18	3508	ADH 7/14/2014	SEE COMPONENTS
A	FITTING LISTED ON PRINT STANDARDIZED.	ADH	10/15/15	3141	APPRD. / DATE	
REV.	DESCRIPTION	BY	DATE	CCN	REH 10/16/2014	
ALL DIMENSIONS ARE IN DECIMAL INCHES TOLERANCES UNLESS OTHERWISE SPECIFIED			THIRD ANGLE PROJECTION ANSI 14.5M		SHOT WEIGHT:	NOTES:
POLYETHYLENE			METAL DECIMAL ± .125" FRACTION ± 1/4" ANGLE ± 1°		SHIPPING WEIGHT: 264 LBS.	
±1% @ 68°F			FINISH:			



**Den Hartog  
INDUSTRIES, INC.**

Ace Roto-Mold • Injection Molding • Blow Molding • Sowjoy  
4010 HOSPERS DRIVE S. BOX 425, HOSPERS, IOWA 51238-0425

DESCRIPTION 500 GALLON DUALLINE TANK ASSEMBLY		
SCALE N.S.	PART NO. DW0500-57	SHEET 1 OF 1