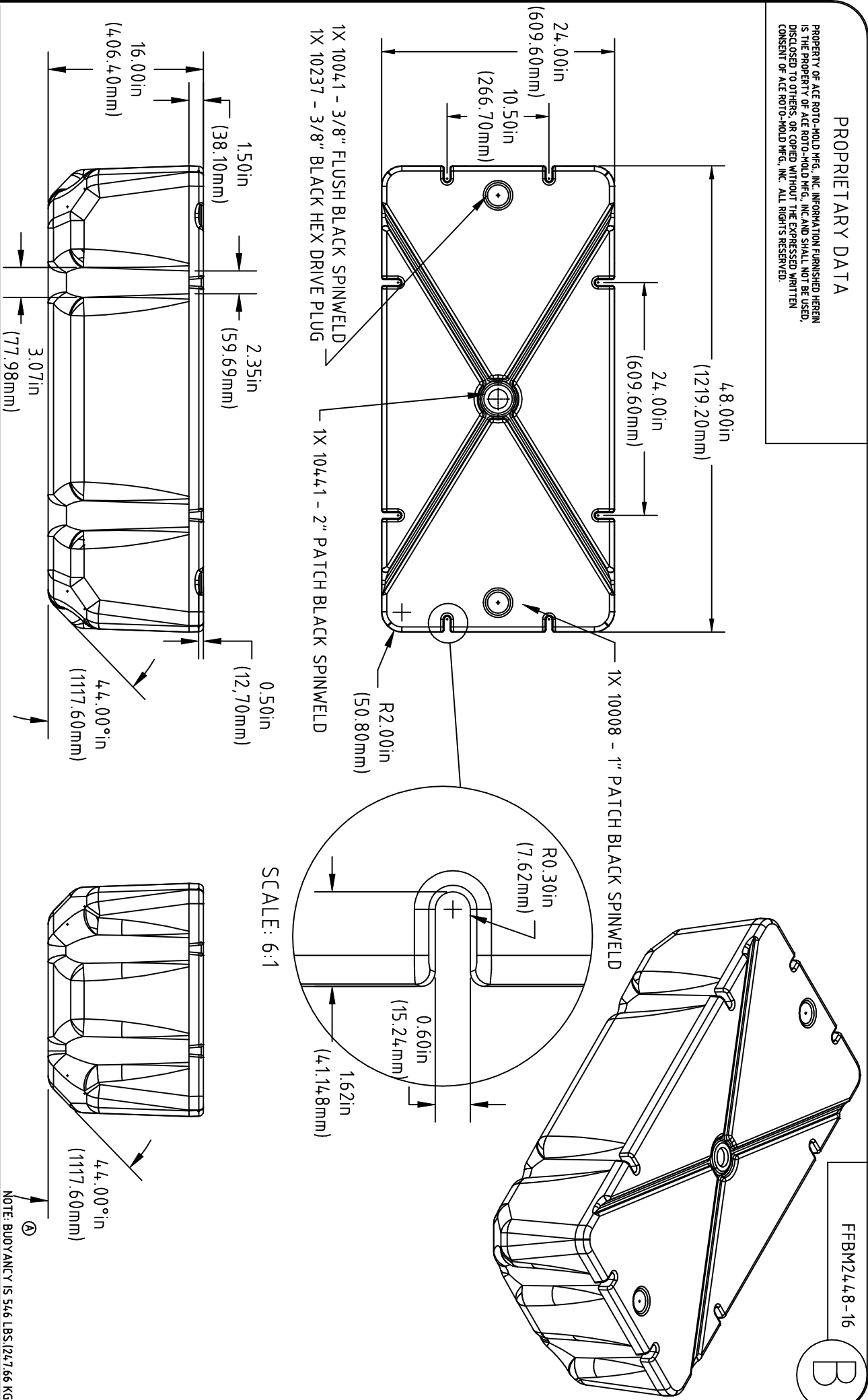


PROPRIETARY DATA

PROPERTY OF ACE ROTO-MOLD MFG., INC. INFORMATION FURNISHED HEREIN IS THE PROPERTY OF ACE ROTO-MOLD MFG., INC. AND SHALL NOT BE USED, DISCLOSED TO OTHERS, OR COPIED WITHOUT THE EXPRESSED WRITTEN CONSENT OF ACE ROTO-MOLD MFG., INC. ALL RIGHTS RESERVED.

FFBM2448-16

B



B	METRIC DIMENSIONS ADDED CN 1685	7-8-08	ADH	DRAWN / DATE	
A	ADD BUOYANCY NOTE	1-12-07	GMC	NVE 11/20/05	
A	ADD FOAM FILLED WEIGHT	1-12-07	GMC	APPRD. / DATE	
REV	DESCRIPTION	DATE	APPRD	REH/7/26/05	

ALL DIMENSIONS ARE IN DECIMAL INCHES TOLERANCES UNLESS OTHERWISE SPECIFIED + 1% @ 68° F		THIRD ANGLE PROJECTION ANSI 14.5M		MATERIAL #80001 B/M PELLET	
1. NOM. WALL @ .150in(3.81mm) 2. SHOT WEIGHT 25 LBS.(11.34 KG.) 3. BLACK COLOR 4. FOAM FILLED WEIGHT IS 35 LBS.(15.88 KG.)		NOTES:		CLIENT / DESCRIPTION 16 INCH HIGH VERSAFLOAT FOAM FILLED	
ACE ROTO-MOLD A DIVISION OF DEN HARTOG INDUSTRIES, INC. 4010 HOSPERS DRIVE S. BOX 425, HOSPERS, IOWA 51238-0421		PART NO. FFBM2448-16		SCALE N.S.	

NOTE: BUOYANCY IS 546 LBS.(247.66 KG.)