

© DEN HARTOG INDUSTRIES, INC.

Copyright. All information furnished within this document, electronic file or design correspondence is the property of Den Hartog Industries, Inc. and shall not be used, disclosed to others or copied without the expressed written consent of Den Hartog Industries, Inc.

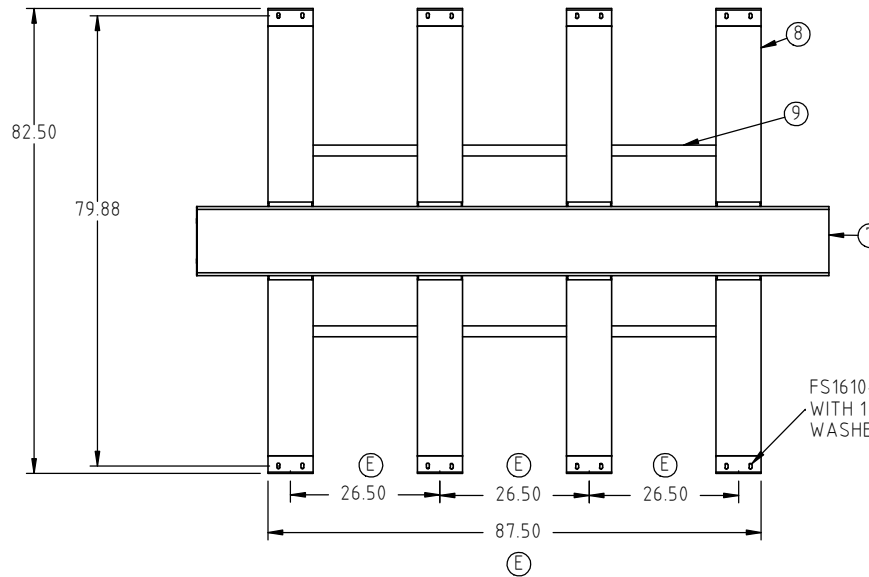
KEY	PART NUMBER	DESCRIPTION	QTY.	(F)
1	19407-1	LOWER END PLATE	1	
2	19407-4	HIGH END PLATE	1	
3	19408-1	LOWER INNER PLATE	1	
4	19408-2	LOWER MIDDLE PLATE	2	
5	19408-3	HIGH CENTER PLATE	2	
6	19408-4	HIGH INNER PLATE	1	
7	19416	SUPPORT CHANNEL	1	(G)
8	19417	TOP PLATE	8	(G)
9	19418	SUPPORT CHANNEL	2	(E)
10	13691	1610 POWDER COAT PLATE	2	(G)

(D)

(F)

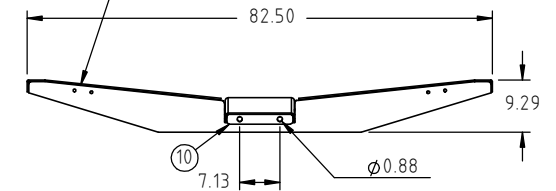
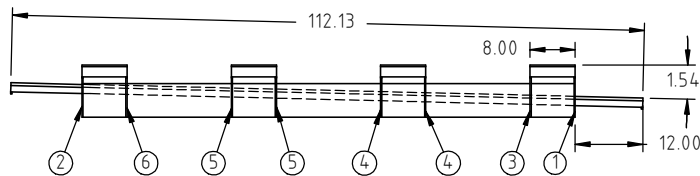
FM1610-SKE

(G)



(E)
FS1610-HPFS ATTACH TO EACH SLOT WITH 1 EA. 3/8" X 2" HEX BOLT, 2 EA. FLAT WASHERS AND 1 EA. HEX NUT (16 PLACES)

FS19419 RETAINER PLATES ATTACH TO EACH HOLE WITH 1 EA. 3/8" X 1-1/4" HEX BOLT, 2 EA. FLAT WASHERS AND 1 EA. HEX NUT



G	19417/19416 TABLE ERROR CORRECTED. POWDER COATING PLATE ADDED TO PRINT	ADH 8/2/12	2465
F	FM1610-SKE WAS FS1610-SK, DRAWING DESCRIPTION / TABLE / TEMPLATE UPDATED.	ADH 9/20/10	2048
E	3/8" X 2" WAS 3/8" X 1-1/4", 87.13" WAS 86.63, 26.50" WAS 26.75", 87.5" WAS 88.50"	REH 4/6/09	1833
D	COMPONENT INFORMATION ADDED TO TABLE DRAWING TEMPLATE UPDATED.	ADH 3/27/09	1828
C	CORRECTED SLOT ORIENTATION	DHJ 3/19/08	1630
B	TOLERANCE WAS 1% @ 68 °F	DHJ 2/1/07	
A	CORRECT MAT. IN NOTE 1	DHJ 2/1/07	
REV	DESCRIPTION	BY / DATE	CCN

DRAWN / DATE	MATERIAL
REH 3/24/06	
APPRD. / DATE	
DHJ 3/24/06	



Den Hartog
INDUSTRIES, INC.

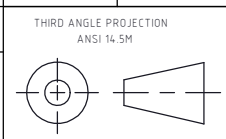
Acro-Roto-Mold Injection Molding Blow Molding Sowjey

4010 HOSPERS DRIVE S. BOX 425, HOSPERS, IOWA 51238-0421

ALL DIMENSIONS ARE IN DECIMAL INCHES TOLERANCES UNLESS OTHERWISE SPECIFIED

POLYETHYLENE METAL
DECIMAL ± .125"
FRACTION ± 1/4"
ANGLE ± 1°

±1% @ 68 °F



SHOT WEIGHT:	NOTES:
SHIPPING WEIGHT: 490.00 LBS	
FINISH: POWDER COATING, BLACK TILE, 40012	

DESCRIPTION (F)	1610 SKID WELDMENT-END
SCALE	N.S.
PART NO. (F)	FM1610-SKE