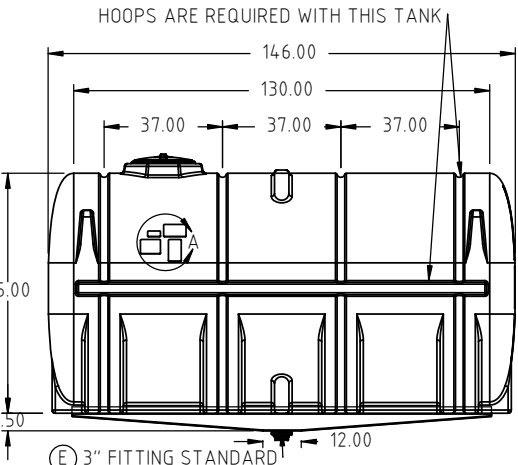
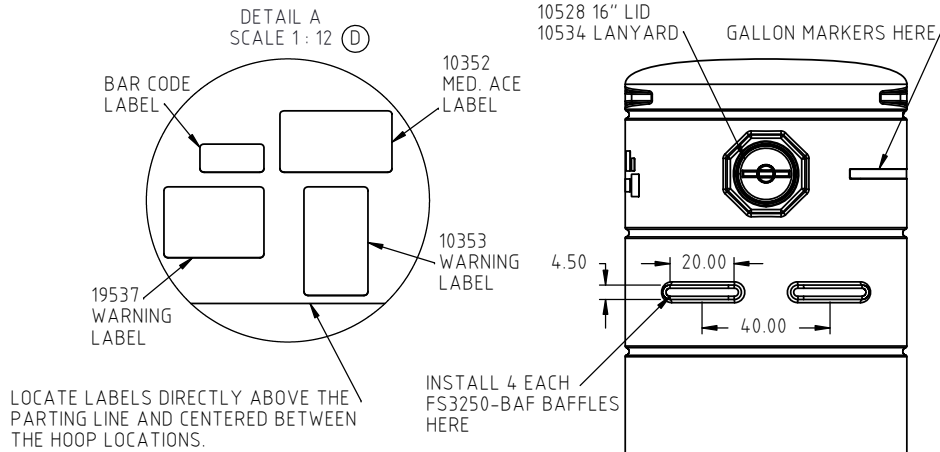


Copyright. All information furnished within this document, electronic file or design correspondence is the property of Den Hartog Industries, Inc. and shall not be used, disclosed to others or copied without the expressed written consent of Den Hartog Industries, Inc.

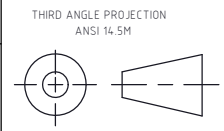
**FM3250-88C
CENTER DRAIN SUMP**



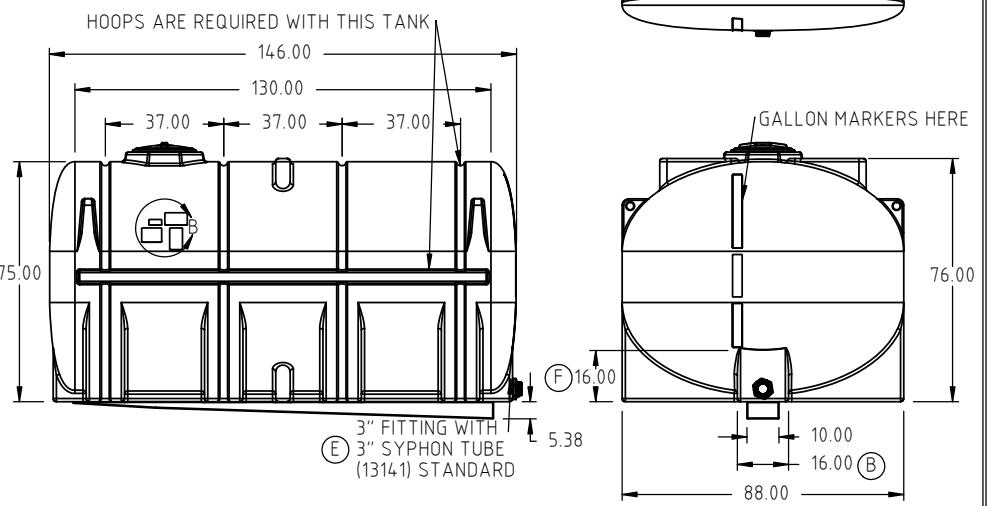
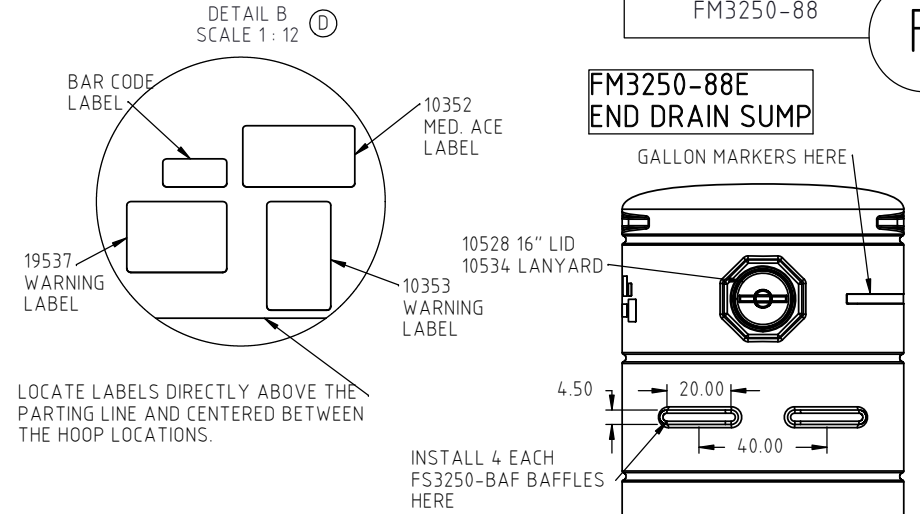
F	16.00" CORRECTED FROM 9.42"	ADH 8/28/19	3839
E	3" STANDARD FITTING WAS 2" FITTING	ADH 2/20/13	2579
D	LABELS MOVED TO IMPROVE VISIBILITY.	ADH 11/29/12	2531
C	ADDED WARNING LABEL. 1/27/12 WAS INCORRECTLY SHOWN AS 12/27/12	REH 8/7/12	2468
B	16.00" WAS 12.00" (C)	ADH 1/27/12	2358
A	SYPHON TUBE NOTE UPDATED	ADH 5/9/11	2212
REV	DESCRIPTION	BY / DATE	CCN

DRAWN / DATE	MATERIAL
ADH 4/19/10	10538 NATURAL
APPRD. / DATE	
REH 4/19/10	
SHOT WEIGHT:	NOTES:
1100 LBS.	1.) 0.535 NOMINAL WALL
SHIPPING WEIGHT:	2.) BLUE, BLACK, WHITE OR YELLOW COLOR
1208 LBS.	
FINISH:	

ALL DIMENSIONS ARE IN DECIMAL INCHES TOLERANCES UNLESS OTHERWISE SPECIFIED
 POLYETHYLENE METAL DECIMAL ± .125" FRACTION ± 1/4" ANGLE ± 1°
 ±1% @ 68°F



**FM3250-88E
END DRAIN SUMP**





Den Hartog
INDUSTRIES, INC.

Ace Roto-Mold Injection Molding Blow Molding Sowjoy

4010 HOSPERS DRIVE S. BOX 425, HOSPERS, IOWA 51238-0425

DESCRIPTION		3250 GALLON ELLIPTICAL LEG TANK WITH SUMP	
SCALE	N.S.	PART NO.	FM3250-88