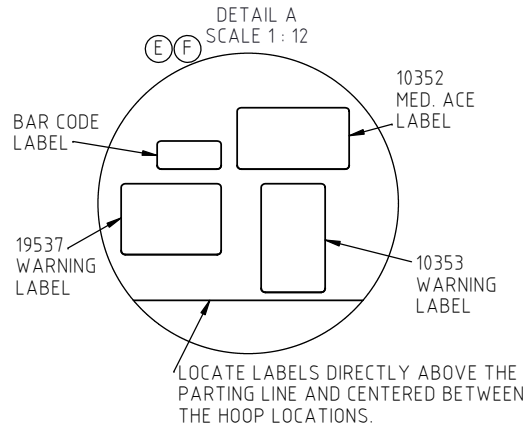
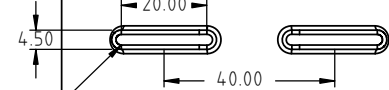


Copyright. All information furnished within this document, electronic file or design correspondence is the property of Den Hartog Industries, Inc. and shall not be used, disclosed to others or copied without the expressed written consent of Den Hartog Industries, Inc.



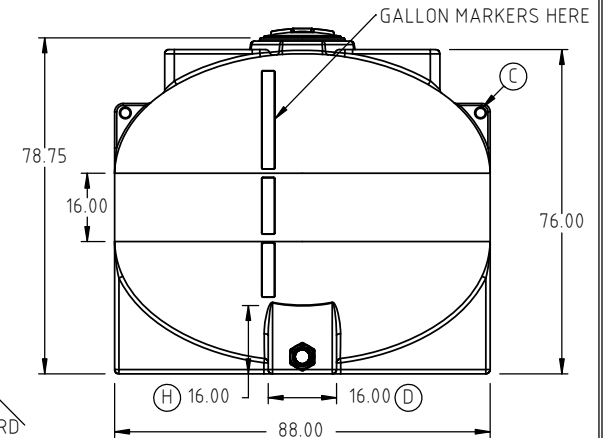
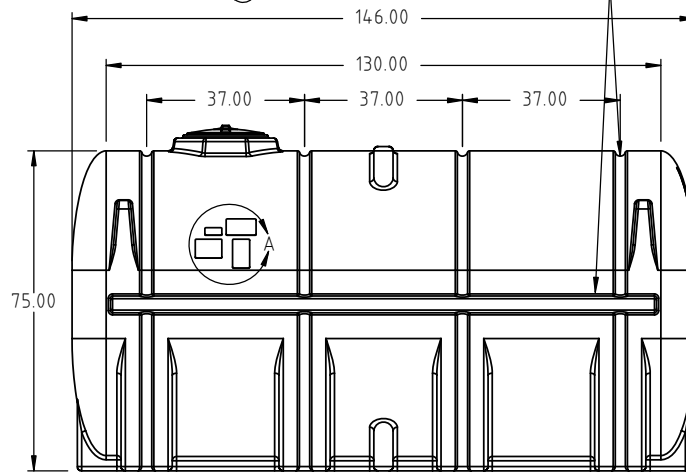
10528 16" LID
10534 LANYARD

GALLON MARKERS
HERE



INSTALL 4 EACH
FS3250-BAF Baffles
HERE

Ⓢ HOOPS ARE REQUIRED WITH THIS TANK



Ⓢ 3" FITTING WITH
SYPHON TUBE STANDARD

| | | | |
|-----|---|--------------|------|
| H | 16.00" CORRECTED FROM 9.42" | ADH 8/29/13 | 3839 |
| G | 3" STANDARD FITTING WAS 2" FITTING | ADH 2/20/13 | 2579 |
| F | LABELS MOVED TO IMPROVE VISIBILITY. | ADH 11/29/12 | 2531 |
| E | ADDED WARNING LABEL | REH 8/7/12 | 2468 |
| D | 16.00" WAS 12.00" | ADH 1/26/12 | 2358 |
| C | SHIP WT.,NOTE ADDED, LIFTING LUGS SHOWN | ADH 4/7/10 | 2015 |
| B | TOL. CORRECTED | REH 3/12/09 | 1813 |
| A | CHANGE PART # | 4/6/06 | |
| REV | DESCRIPTION | BY / DATE | CCN |

| | |
|---------------|---------------|
| DRAWN / DATE | MATERIAL |
| DHJ 9/22/04 | 10538 NATURAL |
| APPRD. / DATE | |
| REH 9/22/04 | |



Den Hartog
INDUSTRIES, INC.

Ace Roto-Mold Injection Molding Blow Molding Sowjoy

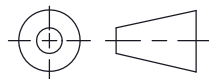
4010 HOSPERS DRIVE S. BOX 425, HOSPERS, IOWA 51238-0425

ALL DIMENSIONS ARE IN DECIMAL INCHES
TOLERANCES UNLESS OTHERWISE SPECIFIED

POLYETHYLENE

±1% @ 68°F

THIRD ANGLE PROJECTION
ANSI 14.5M



| | |
|------------------|-----------|
| SHOT WEIGHT: | 1100 LBS. |
| SHIPPING WEIGHT: | 1208 LBS. |
| FINISH: | |

NOTES:
1.) 0.535 NOMINAL WALL
2.) BLUE, BLACK, WHITE
OR YELLOW COLOR

| | | |
|-------------|---------------------------------|--------------------|
| DESCRIPTION | 3250 GALLON ELLIPTICAL LEG TANK | |
| SCALE | N.S. | PART NO. FS3250-88 |