

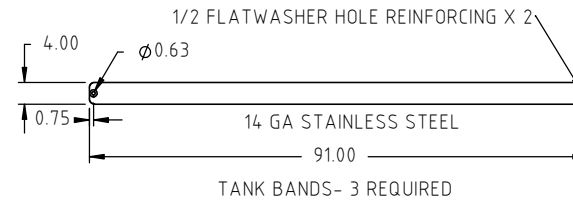
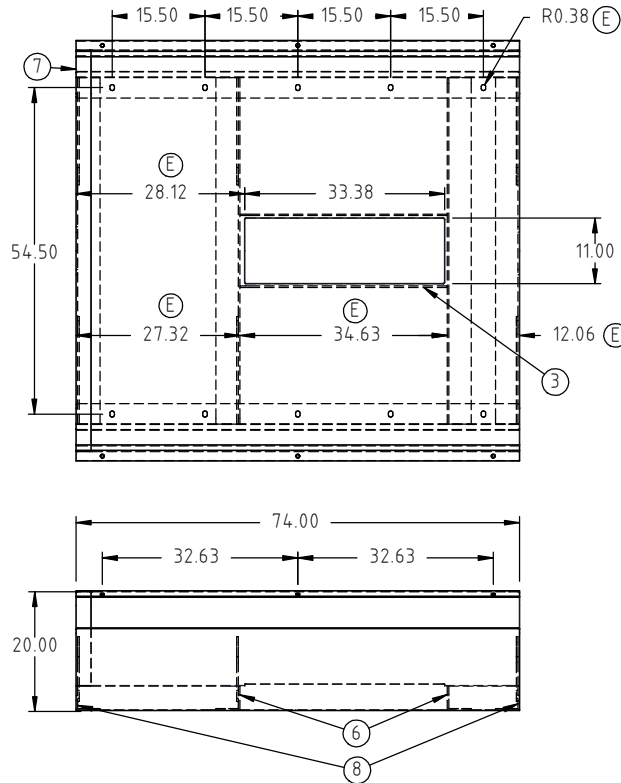
© DEN HARTOG INDUSTRIES, INC.

Copyright. All information furnished within this document, electronic file or design correspondence is the property of Den Hartog industries, Inc. and shall not be used, disclosed to others or copied without the expressed written consent of Den Hartog Industries, Inc.

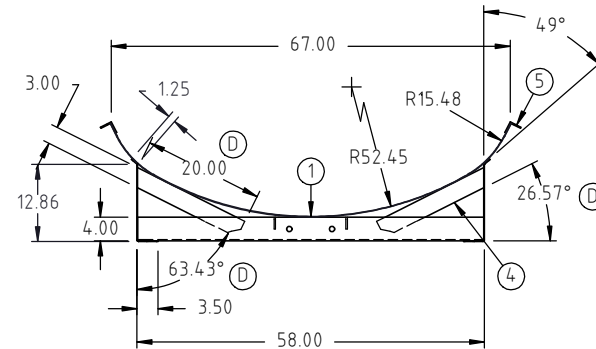
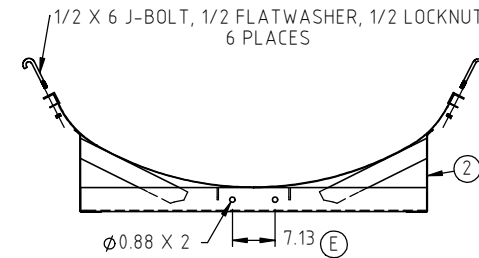
KEY	PART NUMBER	DESCRIPTION	QTY.
1	HE0750-C-1	PAN	1
2	HE0750-C-2	SIDE PANEL	2
3	HE0750-C-3	BASE FLAT STRAP	2
4	HE0750-C-4	PAN SUPPORT STRAP	6
5	HE0750-C-5	ANGLE STEEL	2
6	HE0750-C-6	ANGLE STEEL	2
7	HE0750-C-7	PAN EXTENSION	1
8	HE0750-C-8	ANGLE STEEL	2

HE0750-C

E



TANK BANDS- 3 REQUIRED



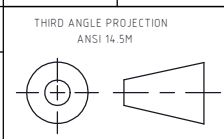
E	POWDER COATING HOLES ADDED. SUMP HOLE LOCATION CORRECTED, SLOTS WHERE HOLES. 405 LB WAS 300 LB.	ADH 12/4/12	2528
D	HE0750-C-4 DIMENSIONS UPDATED	ADH 2/28/08	1606
C	TOLERANCE WAS .5% @ 68 °F	GWC 3/8/07	
B	ENLARGE SUMP CUTOUT	1/5/06	
A	ENLARGE SUMP CUTOUT	5/23/05	
REV	DESCRIPTION	BY / DATE	CCN

DRAWN / DATE	MATERIAL
ADH 7/23/07	
APPRD. / DATE	
REH 10/5/07	

ALL DIMENSIONS ARE IN DECIMAL INCHES
TOLERANCES UNLESS OTHERWISE SPECIFIED

POLYETHYLENE

±1% @ 68 °F



SHOT WEIGHT:

SHIPPING WEIGHT: 405.00 LBS

FINISH: POWDER COATING, BLACK TILE, 40012

NOTES:



Den Hartog
INDUSTRIES, INC.

Ace Roto-Mold Injection Molding Blow Molding Sowjoy

4010 HOSPERS DRIVE S. BOX 425, HOSPERS, IOWA 51238-0425

DESCRIPTION	
ACE 750 GALLON ELLIPTICAL TANK AND CRADLE ASSEMBLY	
SCALE	PART NO.
N.S.	HE0750-C