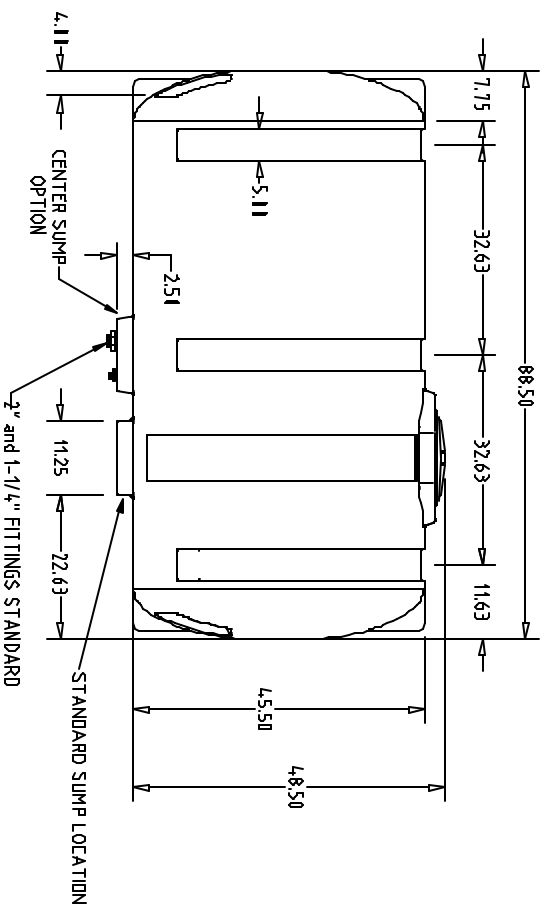
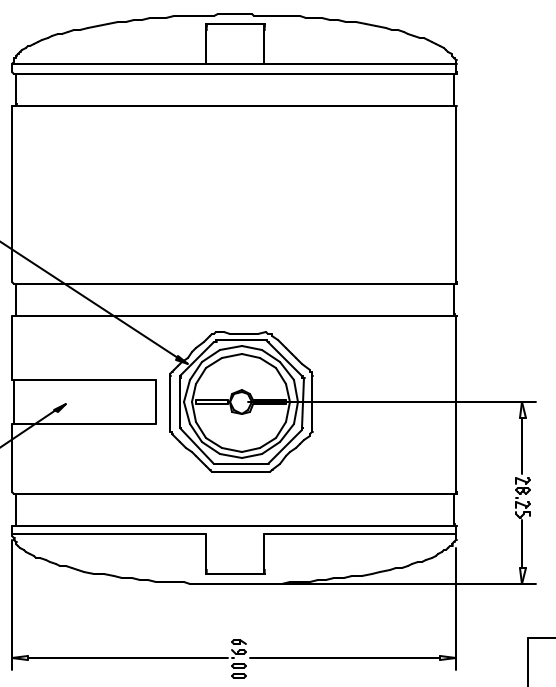
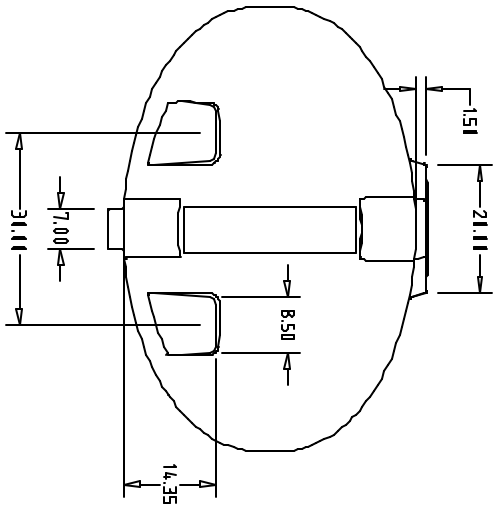
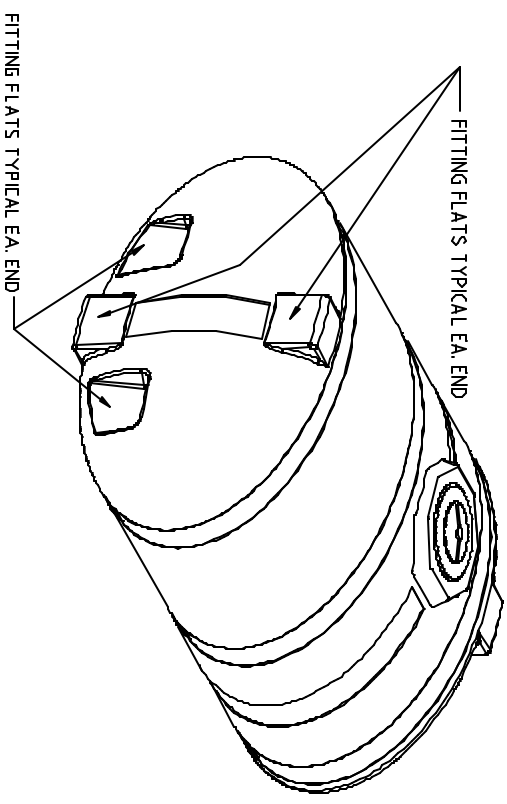


PROPRIETARY DATA

PROPERTY OF ACE ROTO-MOLD MFG., INC. INFORMATION FURNISHED HEREIN IS THE PROPERTY OF ACE ROTO-MOLD MFG., INC. AND SHALL NOT BE USED, DISCLOSED TO OTHERS, OR COPIED WITHOUT THE EXPRESSED WRITTEN CONSENT OF ACE ROTO-MOLD MFG., INC. ALL RIGHTS RESERVED.

HE0850-69



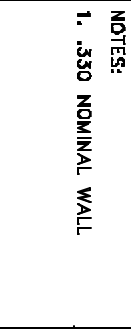
REV	DESCRIPTION	DATE	APPRD	DRAWN / DATE
				DHD/11/18/03
				APPRD. / DATE

MATERIAL / SHOT WEIGHT
246 LBS. POLYETHYLENE

NOTES:
1. 330 NOMINAL WALL

ACE ROTO-MOLD
A DIVISION OF DEN HARTOG INDUSTRIES, INC.
4018 HWY. 60 BLVD., BOX 421, HOESERS, IOWA 51238

ALL DIMENSIONS ARE IN DECIMAL INCHES
TOLERANCES UNLESS OTHERWISE SPECIFIED
+ .5% @ 68° F



CLIENT / DESCRIPTION
ACE 850 GALLON ELLIPTICAL TANK

SCALE N.S. **PART NO.** HE0850-69