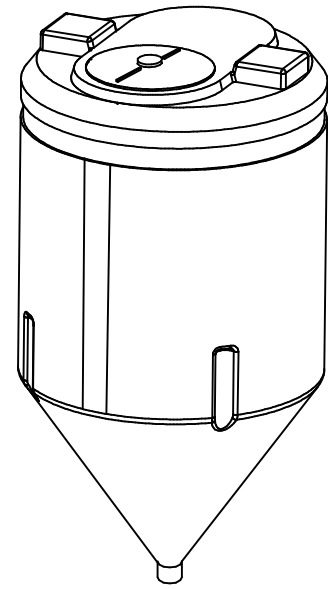
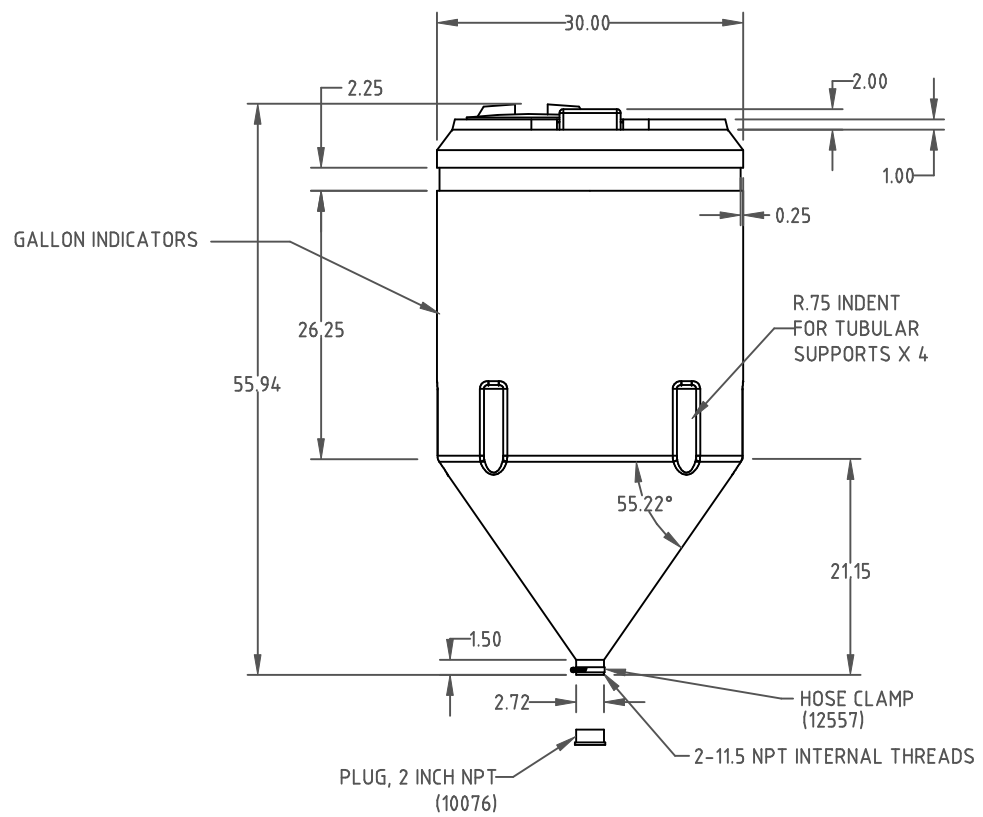
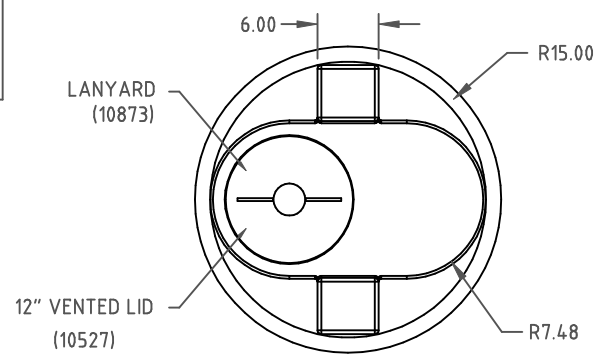


Copyright. All information furnished within this document, electronic file or design correspondence is the property of Den Hartog industries, Inc. and shall not be used, disclosed to others or copied without the expressed written consent of Den Hartog Industries, Inc.



				DRAWN / DATE DHJ 10/26/09	MATERIAL MEDIUM DENSITY POLYETHYLENE
				APPRD. / DATE REH 11/2/09	
REV	DESCRIPTION	BY / DATE	CCN	SHOT WEIGHT: 42 LBS.	NOTES: 1.NATURAL COLOR 2.NOM. WALL .20
	ALL DIMENSIONS ARE IN DECIMAL INCHES TOLERANCES UNLESS OTHERWISE SPECIFIED			SHIPPING WEIGHT: 44 LBS.	
	<u>POLYETHYLENE</u> ±1% @ 68° F			FINISH:	
	<u>METAL</u> DECIMAL ± .125" FRACTION ± 1/4" ANGLE ± 1°				
		THIRD ANGLE PROJECTION ANSI 14.5M			



Den Hartog
INDUSTRIES, INC.

Ace Roto-Mold Injection Molding Blow Molding SowJoy
4010 HOSPERS DRIVE S. BOX 425, HOSPERS, IOWA 51238-0425

DESCRIPTION	110 GALLON FULL DRAIN INDUCTOR		
SCALE	N.S.	PART NO.	INFD110-30