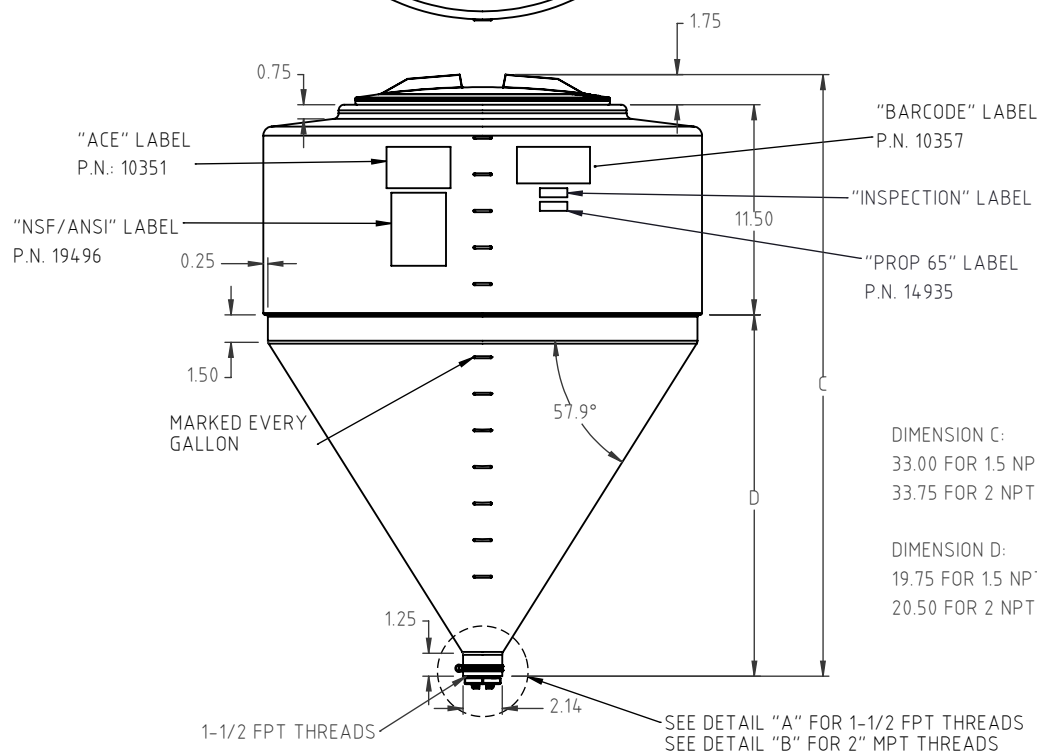
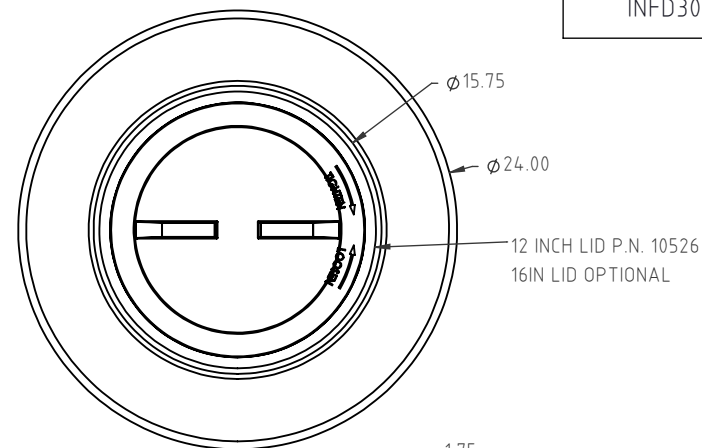


19413 HOSE CLAMP

TIGHTEN TO SECURE PLUG  
FOR SHIPMENT. CLAMP MUST BE  
USED TO TIGHTEN AGAINST OUTLET  
FITTING INSTALLED BY CUSTOMER



INSTALL 10075 PLUG  
FOR SHIPMENT



DIMENSION C:  
33.00 FOR 1.5 NPT OUTLET  
33.75 FOR 2 NPT OUTLET

DIMENSION D:  
19.75 FOR 1.5 NPT OUTLET  
20.50 FOR 2 NPT OUTLET

SEE DETAIL "A" FOR 1-1/2 FPT THREADS  
SEE DETAIL "B" FOR 2" MPT THREADS

C	TRANSFERRED FROM DRAFTSIGHT & ADDED LABELS	SRA	8/23/24	4542	DRAWN / DATE	MATERIAL :
B	ADDED 2 INCH MALE THREAD OPTION	DHJ	8/15/2011	2269	DHJ 2/7/2007	LLDPE
A	10075 PLUG WAS 19412 PLUG	ADH	1/28/2008	1579	APPRD. / DATE	
REV.	DESCRIPTION	BY	DATE	CCN	REH 6/29/2007	
ALL DIMENSIONS ARE IN DECIMAL INCHES TOLERANCES UNLESS OTHERWISE SPECIFIED		THIRD ANGLE PROJECTION ANSI 14.5M		SHOT WEIGHT: 15 LBS	NOTES: 1.) 0.22" NOM. WALL	
POLYETHYLENE		METAL DECIMAL ± .125" FRACTION ± 1/4" ANGLE ± 1°		SHIPPING WEIGHT: 17 LBS		
±1% @ 68°F				FINISH:		

# Den Hartog

## INDUSTRIES, INC.

Ace Roto-Mold • Injection Molding • Blow Molding • Sowjoy  
4010 HOSPERS DRIVE S. BOX 425, HOSPERS, IOWA 51238-0425

DESCRIPTION 30 GAL FULL DRAIN INDUCTOR TANK		
SCALE N.S.	PART NO. INFD30-24	SHEET 1 OF 1