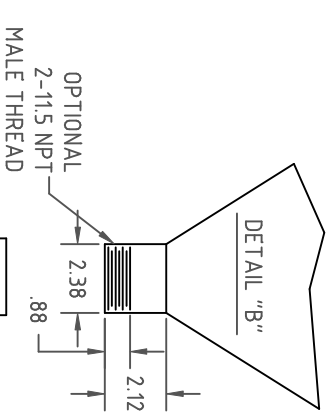
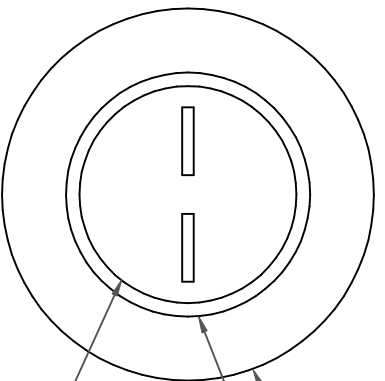
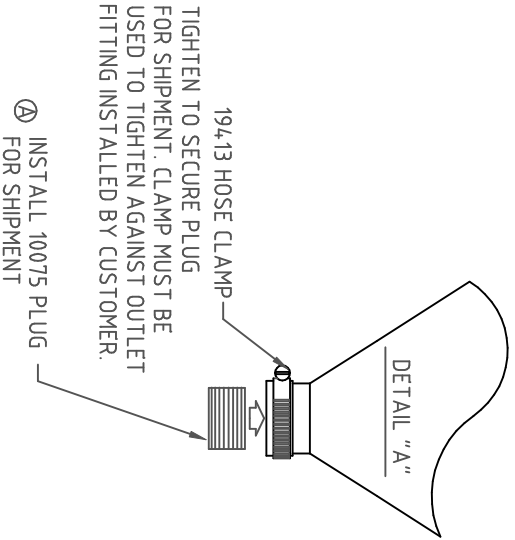


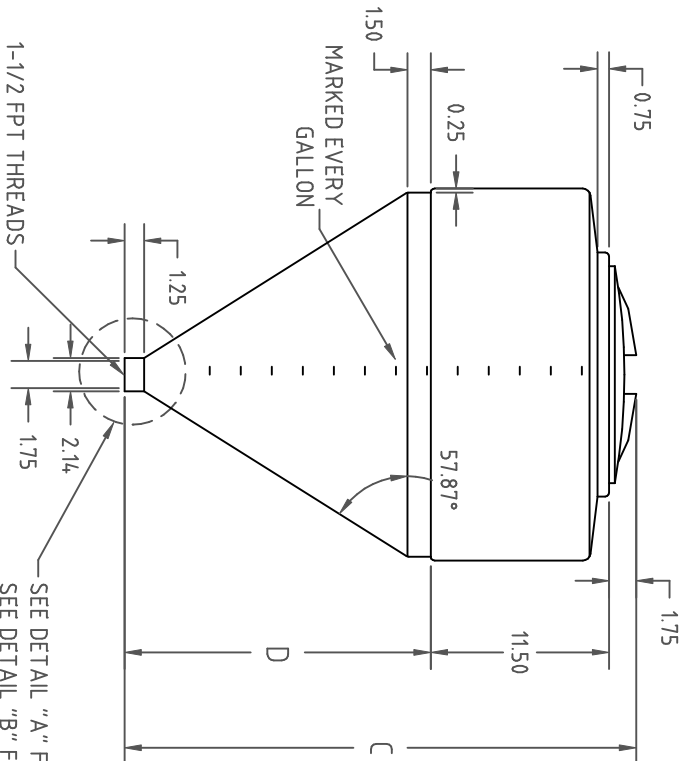
Copyright. All information furnished within this document, electronic file or design correspondence is the property of Den Hartog Industries, Inc. and shall not be used, disclosed to others or copied without the expressed written consent of Den Hartog Industries, Inc.



SC2.00RD-4 CAP FOR SHIPPING



10526 12 INCH NONVENTED LID
 ϕ 24.00
 ϕ 15.75



DIMENSION C
 33.00 FOR 1.5 NPT OUTLET
 33.75 FOR 2 NPT OUTLET

DIMENSION D
 19.75 FOR 1.5 NPT OUTLET
 20.50 FOR 2 NPT OUTLET

SEE DETAIL "A" FOR 1-1/2" FPT THREADS
 SEE DETAIL "B" FOR 2" MP T THREADS

REV	DESCRIPTION	BY / DATE	CCN	DRAWN / DATE	MATERIAL	NOTES:	DESCRIPTION	SCALE	PART NO.
B	ADDED 2 INCH MALE THREAD OPTION	DHJ 8/15/11	2269	DHJ 2/7/07	MEDIUM DENSITY POLYETHYLENE		30 GALLON INDUCTOR (FULL DRAIN)	N.S.	INF D30-24
A	10075 PLUG WAS 194.12 PLUG CCN 1579	ADH 1/28/08		REH 6/29/07					
ALL DIMENSIONS ARE IN DECIMAL INCHES TOLERANCES UNLESS OTHERWISE SPECIFIED		THIRD ANGLE PROJECTION ANSI #4.5M		SHOT WEIGHT: 15 LBS.		SHIPPING WEIGHT: 17 LBS.		ACE ROTO-MOLD INJECTION MOLDING BLOW MOLDING SAW JOY	
POLYETHYLENE		METAL DECIMAL \pm .125" FRACTION \pm 1/4" ANGLE \pm 1°		FINISH:		1.22 WALL		4010 HOSPERS DRIVE S. BOX 425, HOSPERS, IOWA 51238-0425	
								Den Hartog INDUSTRIES, INC.	

\pm 1% @ 68 ° F



Den Hartog
INDUSTRIES, INC.

Ace Roto-Mold Injection Molding Blow Molding Saw Joy

4010 HOSPERS DRIVE S. BOX 425, HOSPERS, IOWA 51238-0425