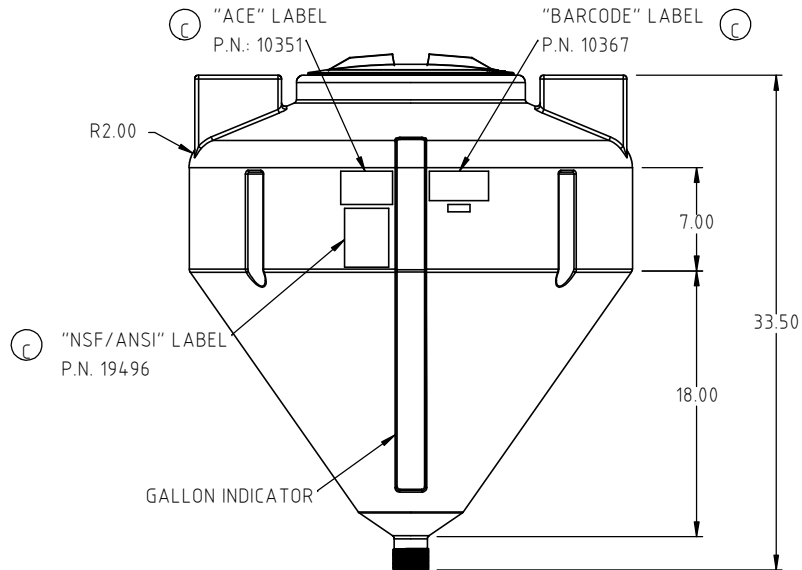
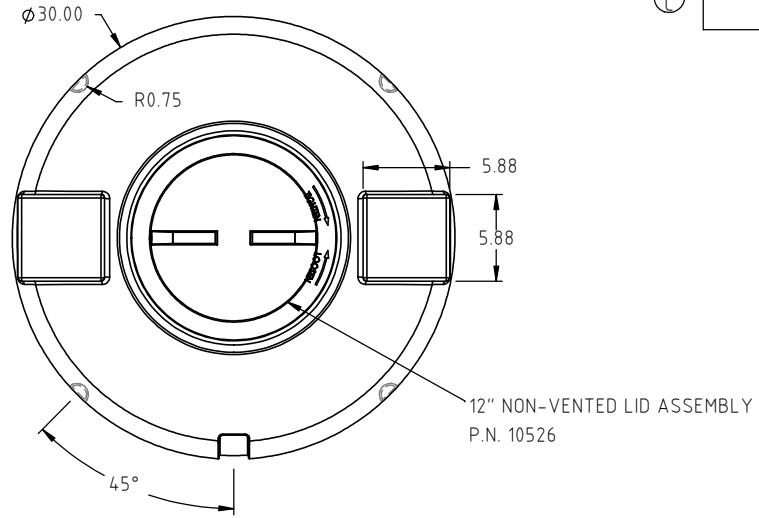
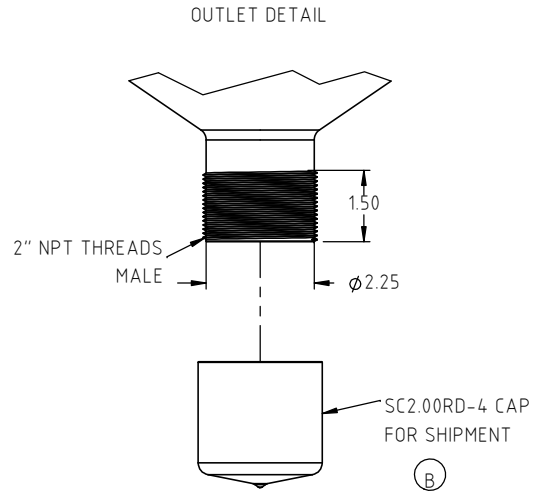


Copyright. All information furnished within this document, electronic file or design correspondence is the property of Den Hartog Industries, Inc. and shall not be used, disclosed to others or copied without the expressed written consent of Den Hartog Industries, Inc.



C	PART NUMBER/DESCRIPTION UPDATED: LABELS ADDED TO PRINT.	ADH 12/18/15	3178	DRAWN / DATE REH 8/7/02	MATERIAL MOBIL 134
B	CAP ADDED	REH 8/2/07	1410	APPRD. / DATE REH 8/7/02	
A	CHANGE BOTTOM OUTLET	7/20/04			
REV	DESCRIPTION	BY / DATE	CCN		
ALL DIMENSIONS ARE IN DECIMAL INCHES TOLERANCES UNLESS OTHERWISE SPECIFIED		THIRD ANGLE PROJECTION ANSI 14.5M		SHOT WEIGHT: 26.00 LBS	NOTES: 1.) NATURAL COLOR 2.) NOM. WALL 0.190
POLYETHYLENE		METAL DECIMAL ± .125" FRACTION ± 1/4" ANGLE ± 1°		SHIPPING WEIGHT: 28.00 LBS	
±1% @ 68°F				FINISH:	



Den Hartog
INDUSTRIES, INC.

Ace Roto-Mold Injection Molding Blow Molding Sowjoy

4010 HOSPERS DRIVE S. BOX 425, HOSPERS, IOWA 51238-0425

DESCRIPTION Ⓒ 40 GAL. FULL DRAIN TANK	
SCALE N.S.	PART NO. Ⓒ INFD40-30