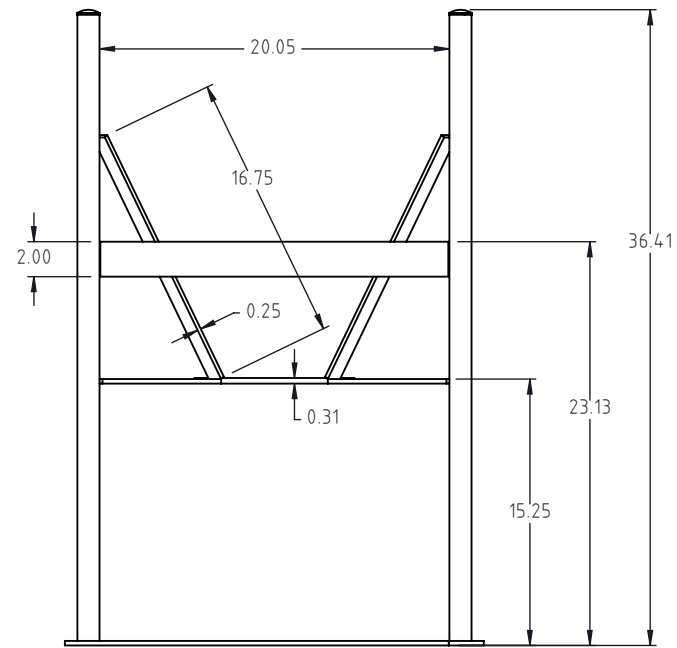
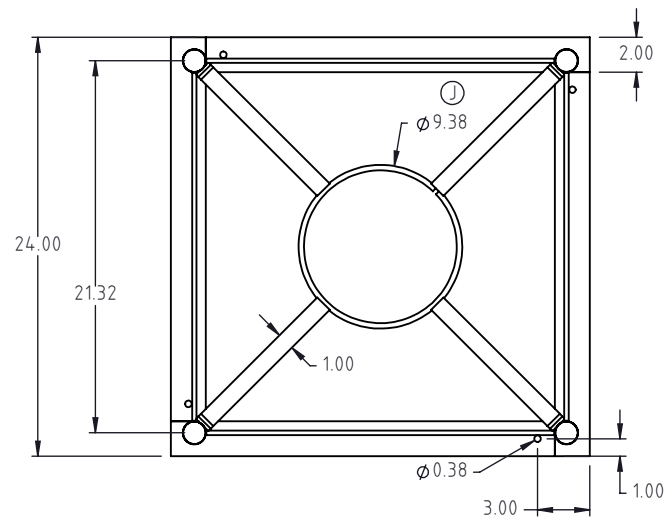
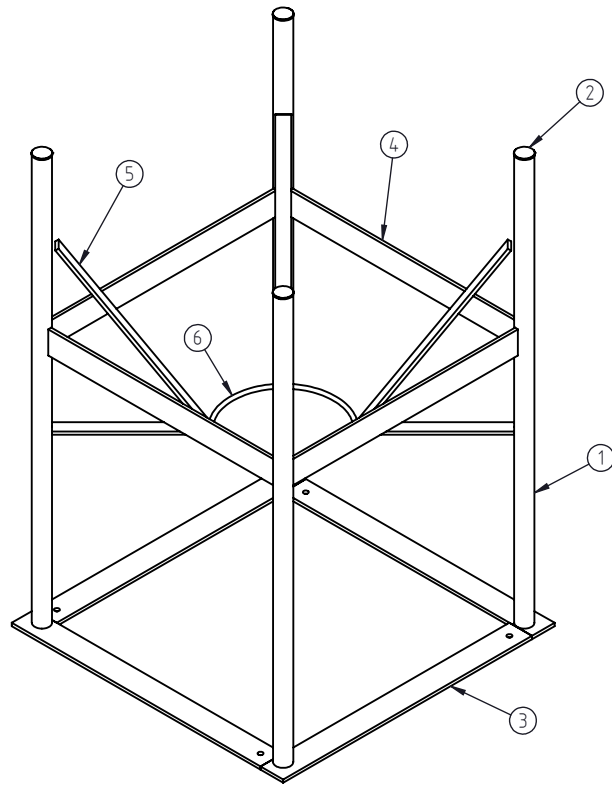


© DEN HARTOG INDUSTRIES, INC.


Copyright. All information furnished within this document, electronic file or design correspondence is the property of Den Hartog industries, Inc. and shall not be used, disclosed to others or copied without the expressed written consent of Den Hartog Industries, Inc.

ITEM NO.	PART NUMBER	DESCRIPTION	QTY.
1	IN40-85-ST-1	IN, STAND 40/85/110 LEG PIPE	4
2	12583	PIPE PLUG, 1" BLACK	4
3	INFD40-ST-2	IN, 40 GAL BASE STRAP FULL DRAIN	4
4	INFD40-ST-1	IN, 40 GAL SIDE STRAP FULL DRAIN	4
5	IN40-85-ST-8	IN/INFD, SUPPORT SUB ASSEMBLY	4
6	IN40-85-ST-2	IN, 40/85/110 CENTER RING	1



INFD40-ST

J

J	UPDATED SHEET FORMAT & LAYOUT. 9.38 WAS 9.00	SRA	9/6/24	4633	DRAWN / DATE	MATERIAL :	 Den Hartog INDUSTRIES, INC. Ace Roto-Mold • Injection Molding • Blow Molding • Sowjoy 4010 HOSPERS DRIVE S. BOX 425, HOSPERS, IOWA 51238-0425
I	IN40/85-ST-6 AND IN40/85-ST-7 WERE COMBINED INTO SUB ASSY. IN40/85-ST-8	ADH	10/26/2016	3311	ADH 7/19/2007	SEE COMPONENTS	
H	INFD40-ST WAS IN40-ST TABLE COMPONENTS AND DESCRIPTION UPDATED	ADH	12/21/2015	3178	APPRD. / DATE		
REV.	DESCRIPTION	BY	DATE	CCN	REH 10/5/2007		
ALL DIMENSIONS ARE IN DECIMAL INCHES TOLERANCES UNLESS OTHERWISE SPECIFIED		THIRD ANGLE PROJECTION ANSI 14.5M			SHOT WEIGHT:	NOTES:	DESCRIPTION IN, STAND 40 GAL (UPS) FULL DRAIN
POLYETHYLENE		METAL			SHIPPING WEIGHT: 40 LBS		
±1% @ 68°F		DECIMAL ± .125" FRACTION ± 1/4" ANGLE ± 1°			FINISH: Powder Coat		
							SCALE N.S.
							PART NO. INFD40-ST
							SHEET 1 OF 1