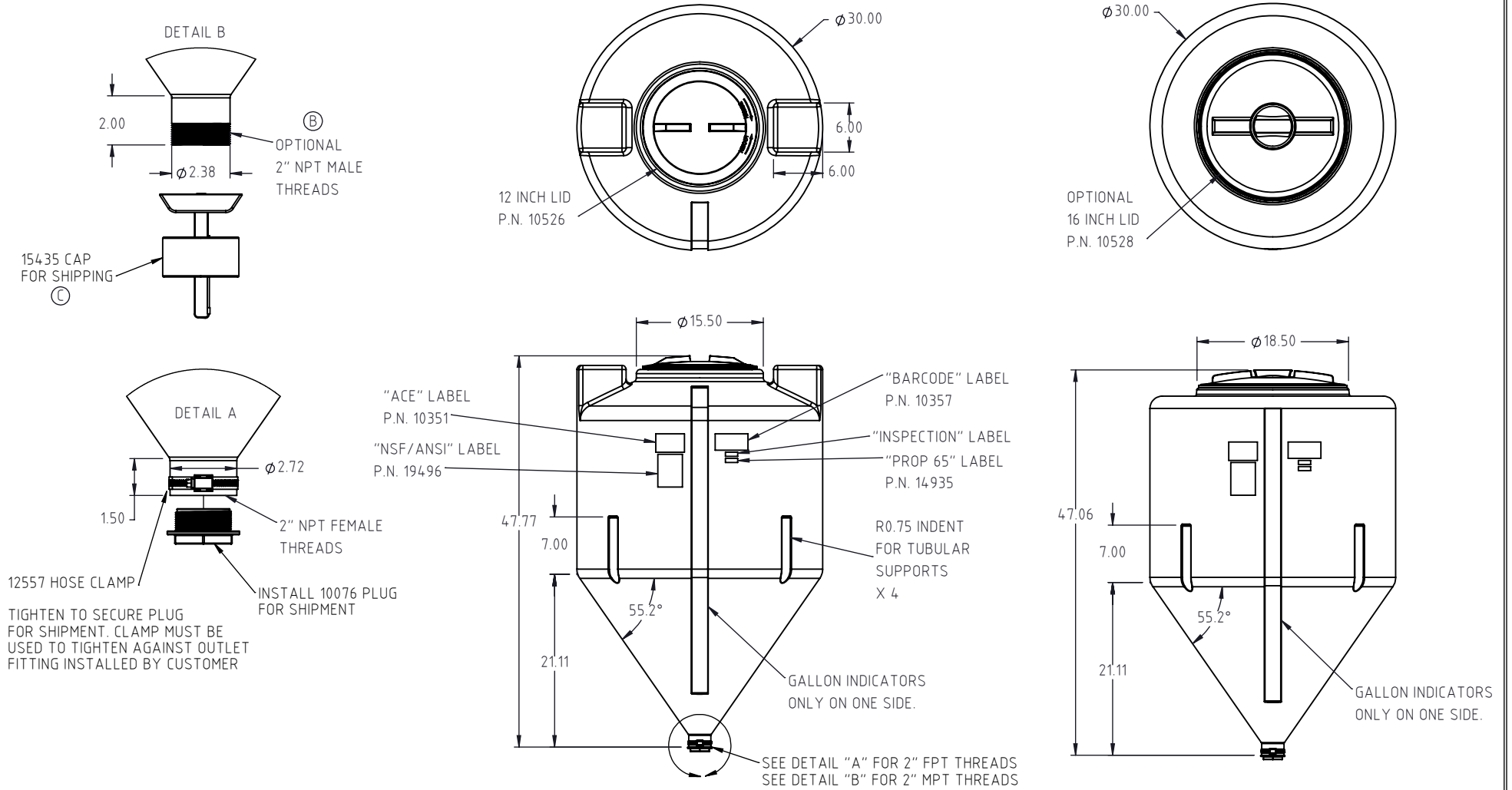
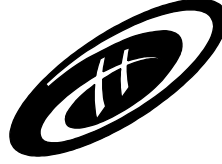


Copyright. All information furnished within this document, electronic file or design correspondence is the property of Den Hartog industries, Inc. and shall not be used, disclosed to others or copied without the expressed written consent of Den Hartog Industries, Inc.



C	15435 WAS SC2.00RD-4 CAP.	BES	10/11/2024	4648	DRAWN / DATE	MATERIAL :
B	ADDED ANGLE AND UPDATED LAYOUT. ADDED MALE THREAD DETAIL	SRA	8/26/24	4542	DHJ 10/26/2005	LLDPE
A	BOM TABLE ADDED. 16" LID DETAIL SHEET ADDED.	ADH	2/1/2023	4384	APPRD. / DATE	
REV.	DESCRIPTION	BY	DATE	CCN	DHJ 6/22/2009	
ALL DIMENSIONS ARE IN DECIMAL INCHES TOLERANCES UNLESS OTHERWISE SPECIFIED		THIRD ANGLE PROJECTION ANSI 14.5M		SHOT WEIGHT: 35.0 LBS	NOTES:	
POLYETHYLENE	METAL DECIMAL ± .125" FRACTION ± 1/4" ANGLE ± 1°			SHIPPING WEIGHT: 37.0 LBS	1.) 0.23" NOM. WALL	
±1% @ 68°F				FINISH:		



Den Hartog INDUSTRIES, INC.

Ace Roto-Mold • Injection Molding • Blow Molding • Sowjoy
4010 HOSPERS DRIVE S. BOX 425, HOSPERS, IOWA 51238-0425

DESCRIPTION 85 GALLON FULL DRAIN INDUCTOR TANK		
SCALE N.S.	PART NO. INFD85-30	SHEET 1 OF 1