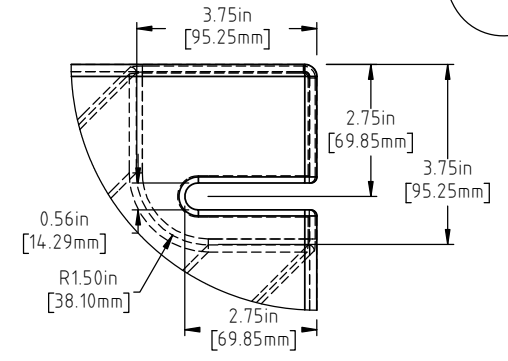
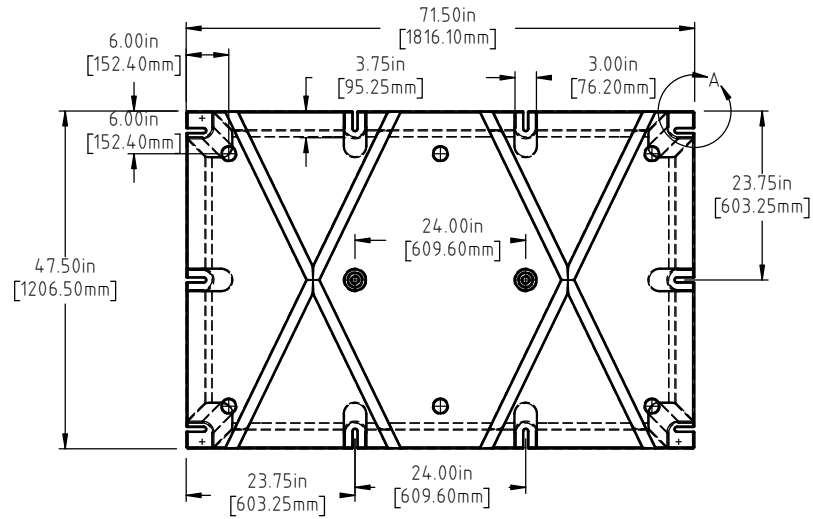


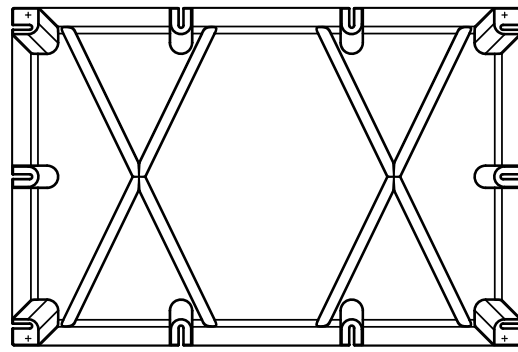
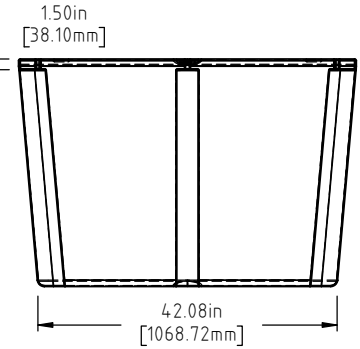
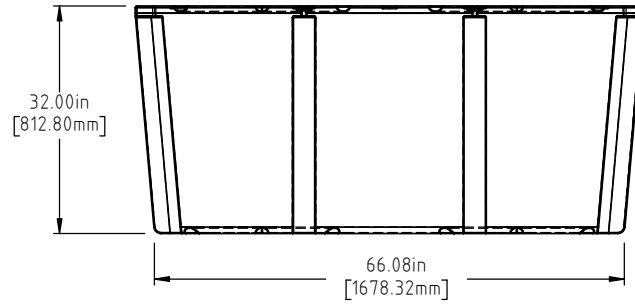
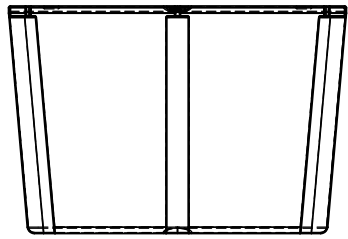
© DEN HARTOG INDUSTRIES, INC.

Copyright. All information furnished within this document, electronic file or design correspondence is the property of Den Hartog Industries, Inc. and shall not be used, disclosed to others or copied without the expressed written consent of Den Hartog Industries, Inc.

LS4872-32



CORNER DETAIL



NOTE: BUOYANCY IS 3305 LBS (1499.13 KG.)

| | | | | | |
|---|-------------|--------------------------------------|-----|------------------------------------|--|
| | | | | DRAWN / DATE ADH 12/20/19 | MATERIAL POLYETHYLENE |
| | | | | APPRD. / DATE REH 2/6/20 | |
| REV | DESCRIPTION | BY / DATE | CCN | | |
| ALL DIMENSIONS ARE IN DECIMAL INCHES TOLERANCES UNLESS OTHERWISE SPECIFIED | | THIRD ANGLE PROJECTION ANSI 14.5M | | SHOT WEIGHT: 76 LBS. (34.48 KG) | NOTES: 1.) AF 76 LBS (34.48 KG) 2.) FF 130 LBS (59 KG) 3.) .150IN (3.82mm) NOM. WALL |
| POLYETHYLENE | | | | SHIPPING WEIGHT: SEE NOTES | |
| ±1% @ 68°F | | | | FINISH: | |



Den Hartog
INDUSTRIES, INC.

Ace Roto-Mold Injection Molding Blow Molding Sowjoy

4010 HOSPERS DRIVE S. BOX 425, HOSPERS, IOWA 51238-0425

| | |
|---|-----------------------|
| DESCRIPTION 48 X 72 X 32 FLOAT LONG SLOT | |
| SCALE N.S. | PART NO. LS4872-32 |