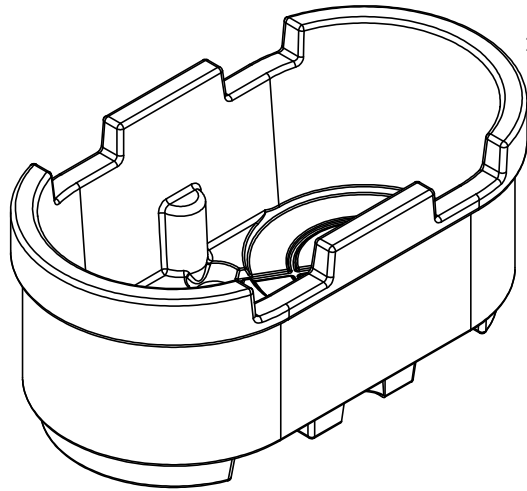


© DEN HARTOG INDUSTRIES, INC.

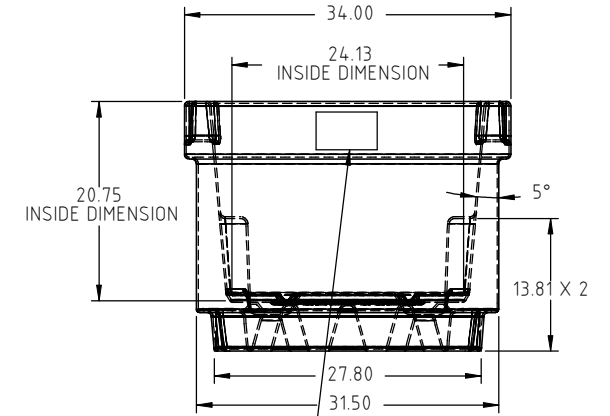
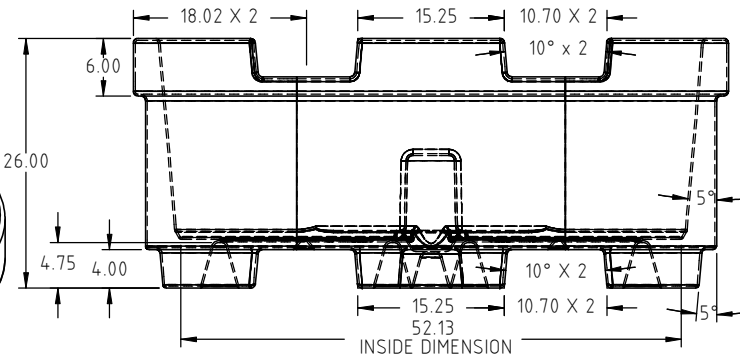
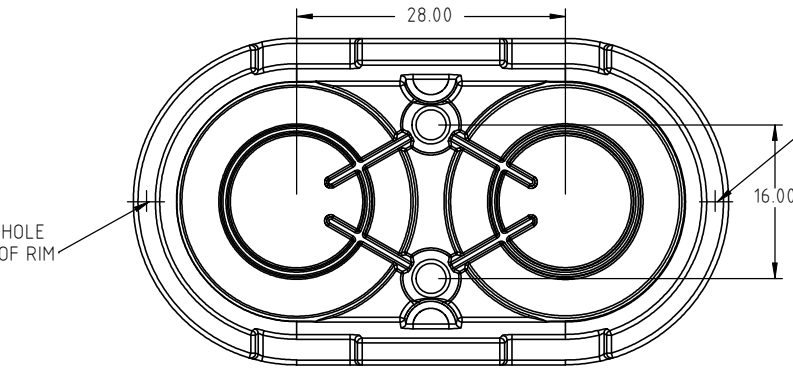
Copyright. All information furnished within this document, electronic file or design correspondence is the property of Den Hartog Industries, Inc. and shall not be used, disclosed to others or copied without the expressed written consent of Den Hartog Industries, Inc.

OP0055-2DC

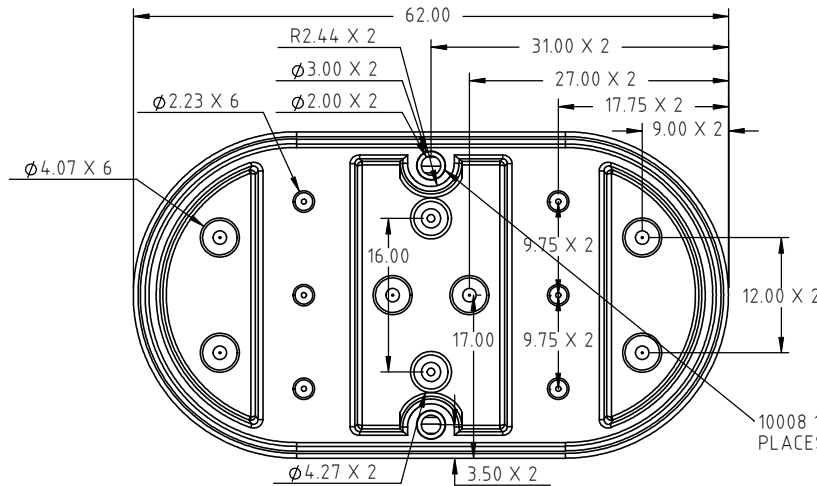


DRILL .093 DIA. HOLE EACH END TOP OF RIM

DRILL .093 DIA. HOLE EACH END TOP OF RIM



10352 DHI LABEL



10008 1" SPINWELD PATCH 2 PLACES (BOTH FILL PORTS)

REV	DESCRIPTION	BY / DATE	CCN	DRAWN / DATE ADH 12/1/09	MATERIAL 10546
				APPROD. / DATE REH 12/10/09	
	ALL DIMENSIONS ARE IN DECIMAL INCHES TOLERANCES UNLESS OTHERWISE SPECIFIED	THIRD ANGLE PROJECTION ANSI 14.5M		SHOT WEIGHT: 70.00 LBS	NOTES: 1.) 0.190 WALL 2.) BLACK COLOR
	POLYETHYLENE ±1% @ 68°F			SHIPPING WEIGHT: 70.00 LBS	
	METAL DECIMAL ± .125" FRACTION ± 1/4" ANGLE ± 1°			FINISH:	



Den Hartog
INDUSTRIES, INC.

Acra Roto-Mold Injection Molding Blow Molding Sowjoy

4010 HOSPERS DRIVE S. BOX 425, HOSPERS, IOWA 51238-0425

DESCRIPTION	2 DRUM CONTAINMENT TANK	
SCALE	N.S.	PART NO. OP0055-2DC