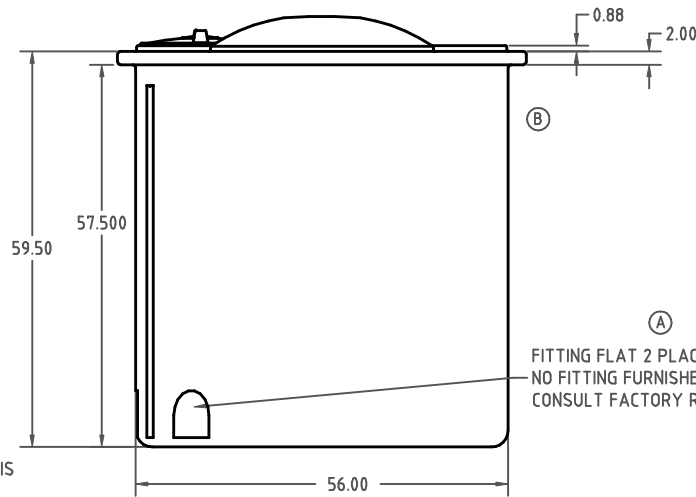
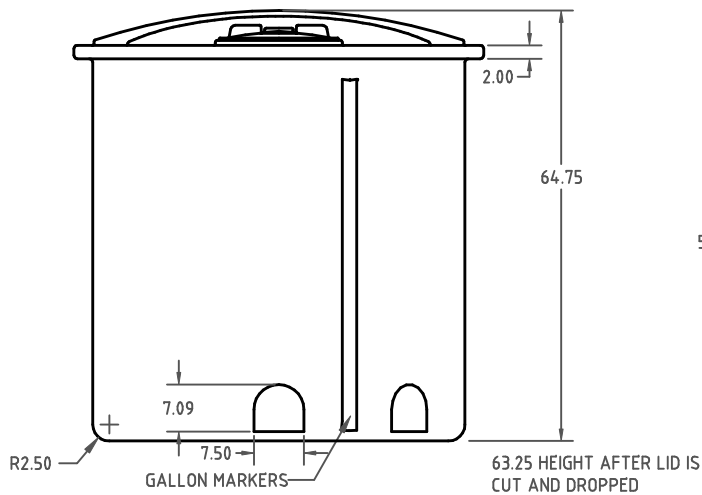
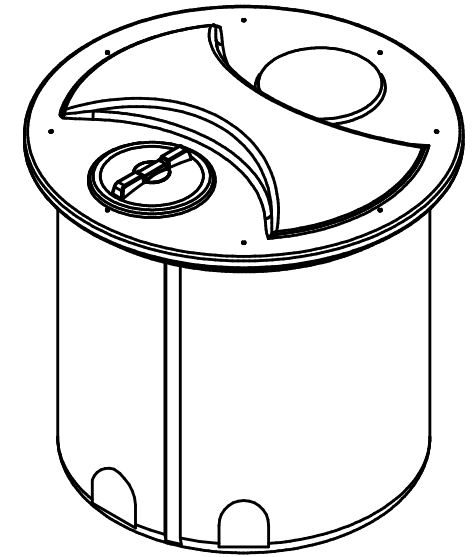
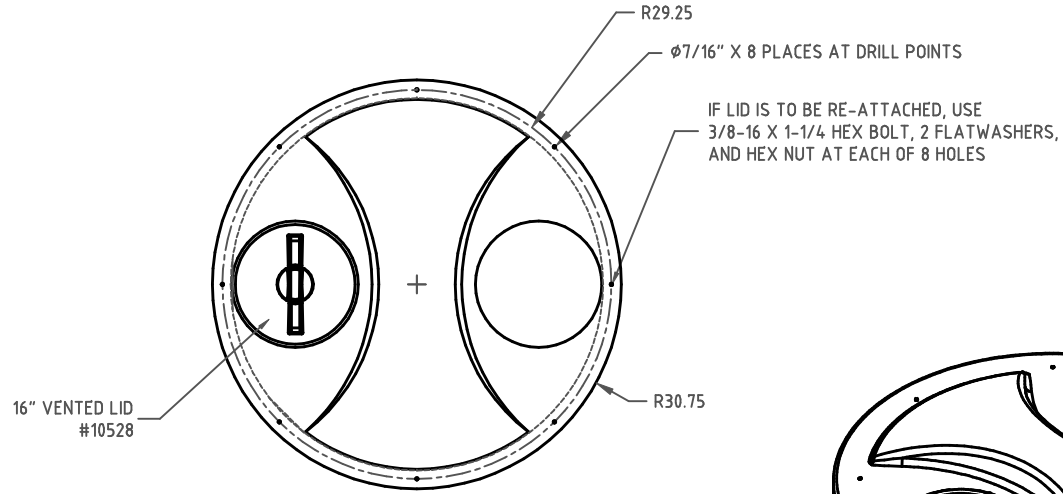
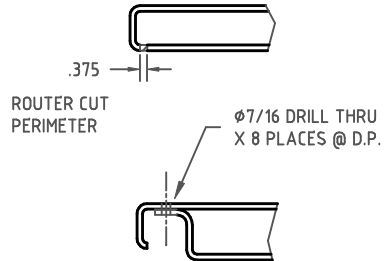



Copyright. All information furnished within this document, electronic file or design correspondence is the property of Den Hartog Industries, Inc. and shall not be used, disclosed to others or copied without the expressed written consent of Den Hartog Industries, Inc.

LID CUT AND DROP DETAIL



D	CHANGE PRINT TO MATCH PRODUCTION	9/28/10 DHJ	2088
C	150 WAS 145 CCN 1795	2/6/09 REH	
B	MODIFIED RIM DESIGN	5/12/06 NVE	
A	FITTING REMOVED AS STD.	3/20/01	
REV	DESCRIPTION	BY / DATE	CCN
ALL DIMENSIONS ARE IN DECIMAL INCHES TOLERANCES UNLESS OTHERWISE SPECIFIED		THIRD ANGLE PROJECTION ANSI 14.5M	
POLYETHYLENE		METAL	
±1% @ 68° F		DECIMAL ± .125" FRACTION ± 1/4" ANGLE ± 1°	

DRAWN / DATE	MATERIAL
REH/9/18/00	POLYETHYLENE
APPRD. / DATE	
REH/9/18/00	
SHOT WEIGHT:	NOTES:
150 LBS.	1. NOM. WALL @ .250
SHIPPING WEIGHT:	2. XXXXX
FINISH:	XXXXX



Den Hartog

INDUSTRIES, INC.

Ace Roto-Mold Injection Molding Blow Molding SowJoy

4010 HOSPERS DRIVE S. BOX 425, HOSPERS, IOWA 51238-0425

DESCRIPTION	ACE 500 GALLON OPEN TOP TANK	
SCALE	N.S.	PART NO. OP0500-56