

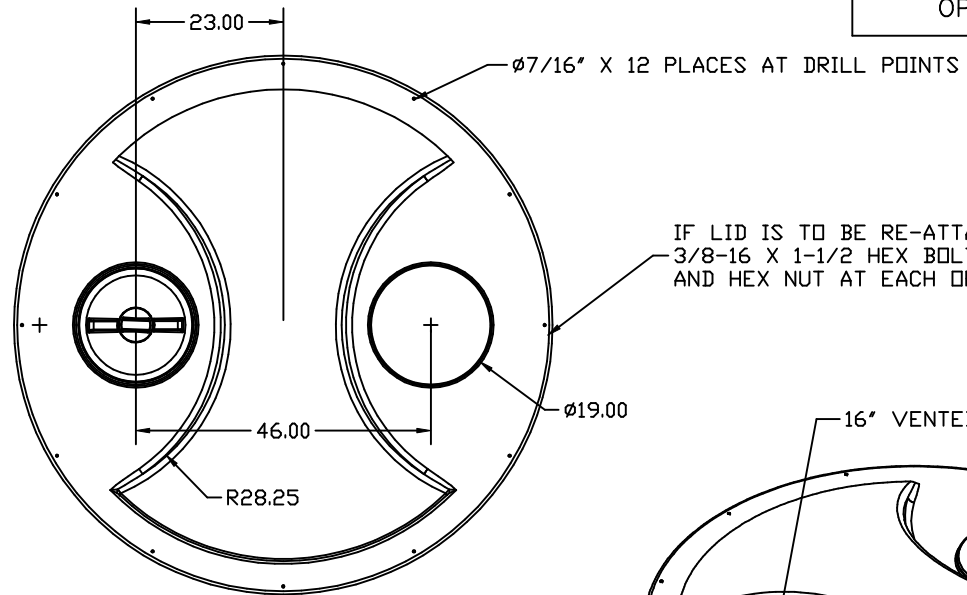
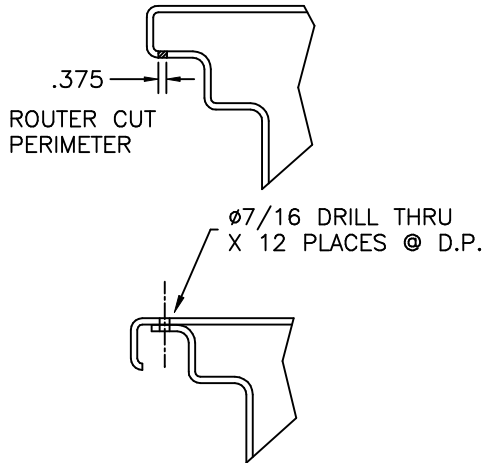
© DEN HARTOG INDUSTRIES, INC.

Copyright. All information furnished within this document, electronic file or design correspondence is the property of Den Hartog Industries, Inc. and shall not be used, disclosed to others or copied without the expressed written consent of Den Hartog Industries, Inc.

OP1000-74

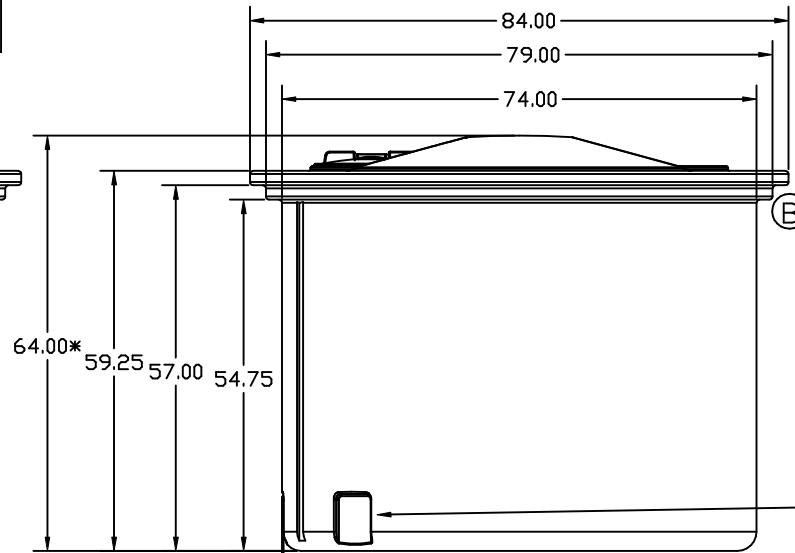
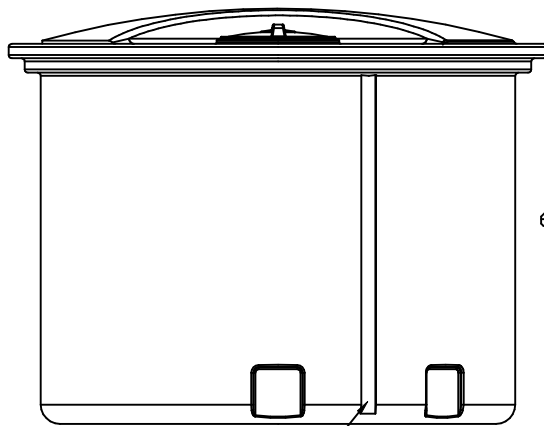
C

LID CUT AND DROP DETAIL



IF LID IS TO BE RE-ATTACHED, USE 3/8-16 X 1-1/2 HEX BOLT, 2 FLATWASHERS, AND HEX NUT AT EACH OF 12 HOLES

16" VENTED LID ASSEMBLY



\*HEIGHT AFTER LID IS CUT AND DROPPED

A

7.50 SQUARE GITTING SUMP 2 PLACES  
NO FITTING IS FURNISHED WITH STANDARD TANK.  
CONSULT FACTORY REGARDING FITTING OPTIONS.

C	WT CHANGED CCN 1764	12/11/08	ADH	DRAWN / DATE	MATERIAL
B	MODIFIED RIM DESIGN	5/15/06	NVE	REH /9/18/00	
A	FITTING REMOVED AS STD.	3/20/01		APPRD. / DATE	HDPE OR EQUIVALENT REFERENCE MATERIAL DATA SHEET FOR SPECIFIC PROPERTIES.
REV	DESCRIPTION	DATE	APPRD	DHJ /9/18/00	



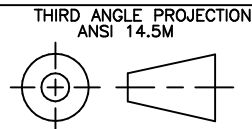
ACE ROTO-MOLD

A DIVISION OF DEN HARTOG INDUSTRIES, INC.  
4010 HOSPERS DRIVE S. BOX 425, HOSPERS, IOWA 51238-0421

CLIENT / DESCRIPTION

1000 GALLON OPEN TOP TANK

ALL DIMENSIONS ARE IN DECIMAL INCHES  
TOLERANCES UNLESS OTHERWISE SPECIFIED  
± 1% @ 68° F



NOTES:  
1. NOM. WALL @ .280  
2. SHOT WEIGHT 275 LBS. @  
3. SHIPPING WEIGHT 277 LBS.  
4. ALL RADII .50 UNLESS  
OTHERWISE SPECIFIED

SCALE

N.S.

PART NO.

OP1000-74