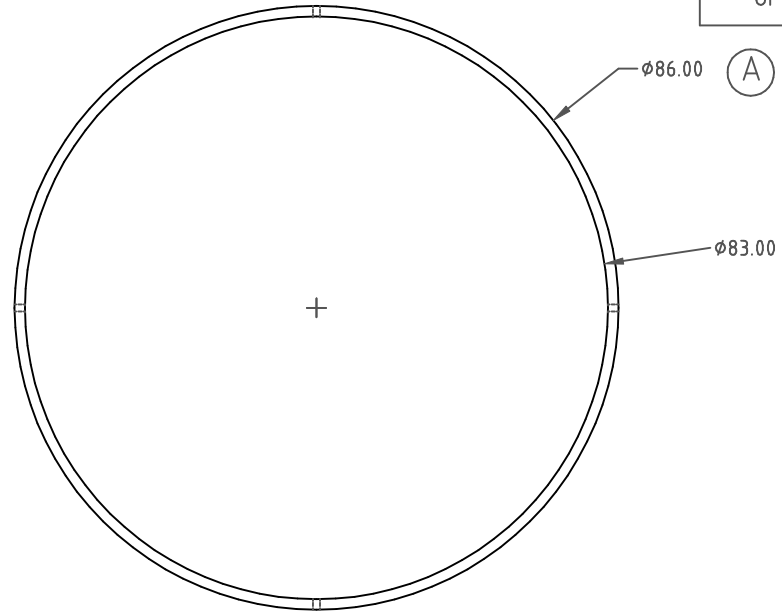


PROPRIETARY DATA

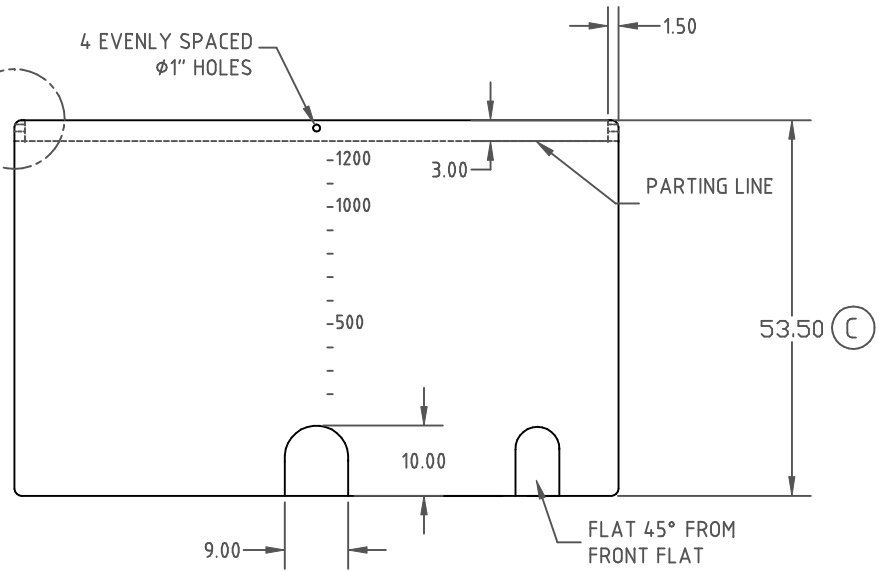
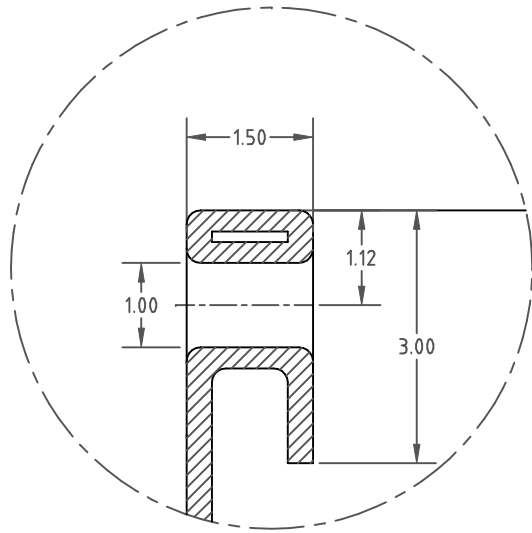
PROPERTY OF DEN HARTOG INDUSTRIES, INC. INFORMATION FURNISHED HEREIN IS THE PROPERTY OF DEN HARTOG INDUSTRIES, INC. AND SHALL NOT BE USED, DISCLOSED TO OTHERS, OR COPIED WITHOUT THE EXPRESSED WRITTEN CONSENT OF DEN HARTOG INDUSTRIES, INC. ALL RIGHTS RESERVED.

OP1200-86

C



DETAIL OF RIM (B)

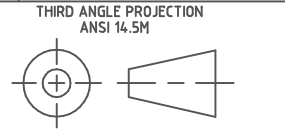


C	53.50 WAS 56.00	4/20/09	ADH	1842	DRAWN / DATE	MATERIAL
B	CLEARIFY THROUGH HOLE 4/8/08 DHJ			1643	NVE 6/13/05	
A	DIA WAS 85, PN WAS OP1200-85	7/31/06	NVE		APPRD. / DATE	HDPE OR EQUIVALENT REFERENCE MATERIAL DATA SHEET FOR SPECIFIC PROPERTIES.
REV	DESCRIPTION	DATE	APPRD	CCN	DHJ 6/22/05	

ACE ROTO-MOLD
A DIVISION OF DEN HARTOG INDUSTRIES, INC.
4010 HOSPERS DRIVE SOUTH, BOX 425, HOSPERS, IOWA 51238

CLIENT / DESCRIPTION
1200 GALLON OPEN TOP TANK - NO LID

ALL DIMENSIONS ARE IN DECIMAL INCHES
TOLERANCES UNLESS OTHERWISE SPECIFIED
± 1% @ 68° F



NOTES:
1. .240 WALL THICKNESS AT FITTING
2. SHOT WEIGHT 200 LBS.
3. SHIP WEIGHT 200 LBS.

SCALE N.S. PART NO. OP1200-86