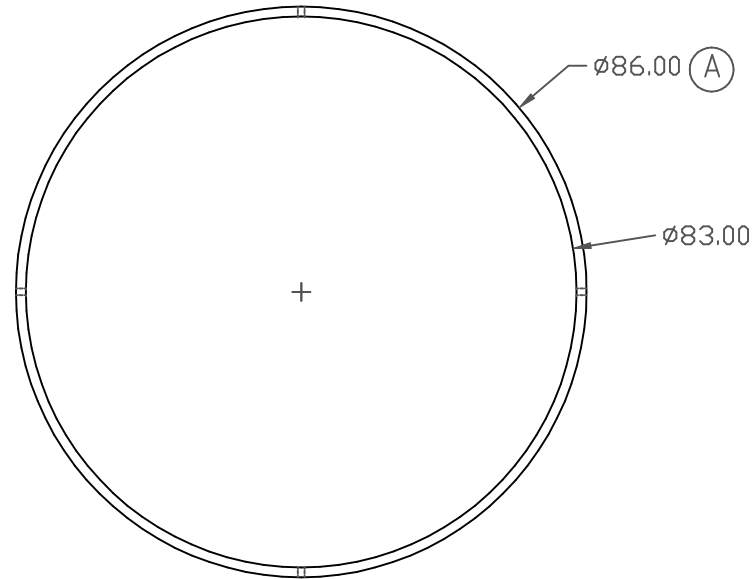
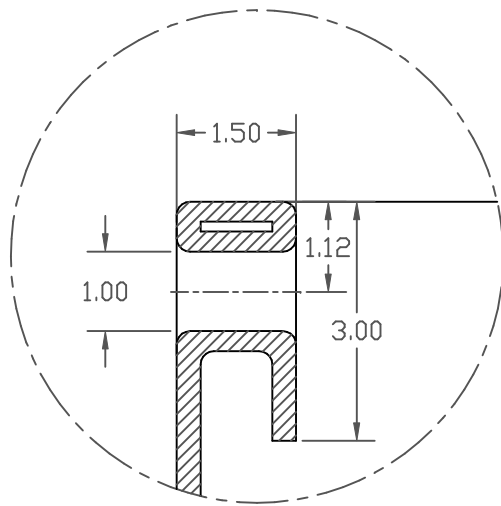


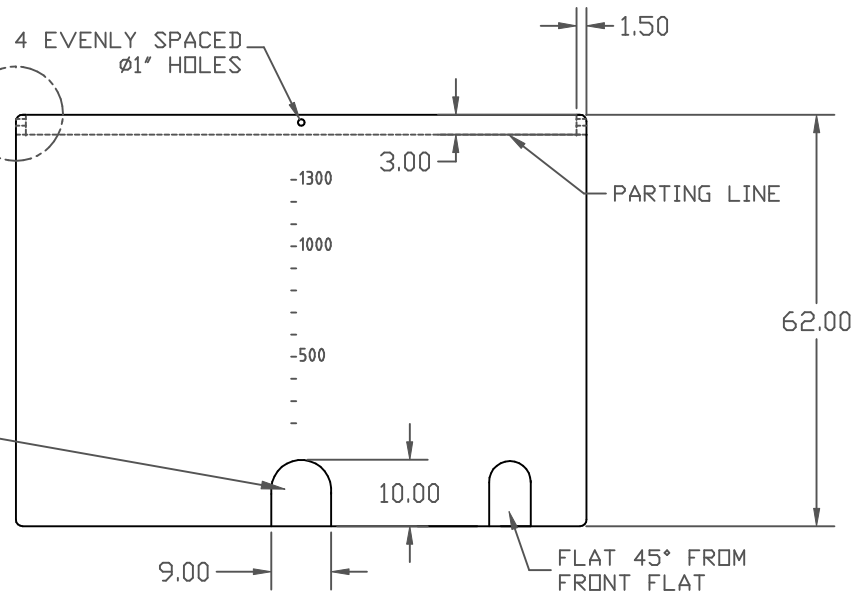
PROPERTY OF DEN HARTOG INDUSTRIES, INC. INFORMATION FURNISHED HEREIN IS THE PROPERTY OF DEN HARTOG INDUSTRIES, INC. AND SHALL NOT BE USED, DISCLOSED TO OTHERS, OR COPIED WITHOUT THE EXPRESSED WRITTEN CONSENT OF DEN HARTOG INDUSTRIES, INC. ALL RIGHTS RESERVED.



DETAIL OF RIM (B)



2 INCH STANDARD FITTING



B	CLARIFY THROUGH HOLE 4/8/08	DHJ		1643
A	DIA WAS 85, PN WAS OP1350-85	7/31/06	NVE	
REV	DESCRIPTION	DATE	APPRD	CCN

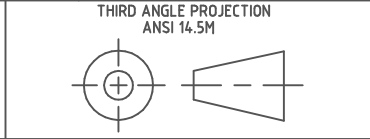
DRAWN / DATE	NVE 6/13/05
APPRD. / DATE	DHJ 6/22/05

MATERIAL
 HDPE OR EQUIVALENT
 REFERENCE MATERIAL DATA SHEET
 FOR SPECIFIC PROPERTIES.

ACE ROTO-MOLD
 A DIVISION OF DEN HARTOG INDUSTRIES, INC.
 4010 HWY. 60 BLVD, BOX 425, HOSPERS, IOWA 51238

CLIENT / DESCRIPTION
 1350 GALLON OPEN TOP TANK - NO LID

ALL DIMENSIONS ARE IN DECIMAL INCHES
 TOLERANCES UNLESS OTHERWISE SPECIFIED
 + 1% @ 68° F
 -



- NOTES:
- .260 WALL THICKNESS AT FITTING
 - SHOT WEIGHT 217 LBS.
 - SHIP WEIGHT 217 LBS.

SCALE
 N.S.

PART NO.
 OP1350-86