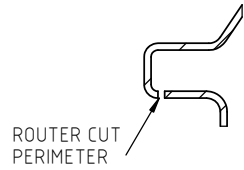
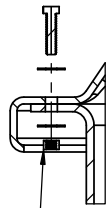


Copyright. All information furnished within this document, electronic file or design correspondence is the property of Den Hartog Industries, Inc. and shall not be used, disclosed to others or copied without the expressed written consent of Den Hartog Industries, Inc.

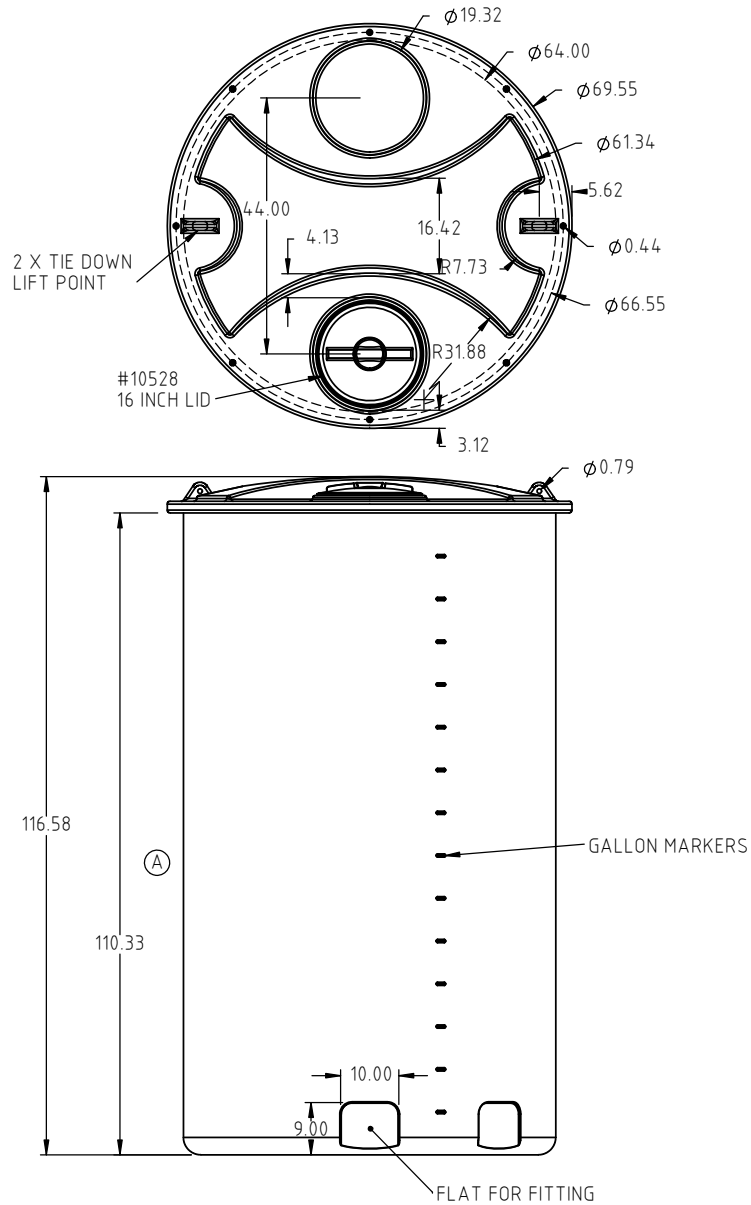
LID TRIM AND FASTENING DETAIL




ROUTER CUT PERIMETER



3/8" X 1-1/2" HEX BOLT, 3/8" FLAT WASHERS AND HEX NUT 8 PLACES



				DRAWN / DATE DHJ 2/2/12	MATERIAL 10420
A	RIBS REMOVED	ADH 10/9/18	3650	APPRD. / DATE REH 3/6/12	
REV	DESCRIPTION	BY / DATE	CCN		
ALL DIMENSIONS ARE IN DECIMAL INCHES TOLERANCES UNLESS OTHERWISE SPECIFIED		THIRD ANGLE PROJECTION ANSI 14.5M		SHOT WEIGHT: 335.00 LBS	NOTES: 1.) 0.34" WALL
POLYETHYLENE		METAL DECIMAL ± .125" FRACTION ± 1/4" ANGLE ± 1°		SHIPPING WEIGHT: 337.00 LBS	
±1% @ 68°F				FINISH:	



Den Hartog

INDUSTRIES, INC.

Ace Roto-Mold Injection Molding Blow Molding Sowjoy

4010 HOSPERS DRIVE S. BOX 425, HOSPERS, IOWA 51238-0425

DESCRIPTION 1505 GALLON OPEN OPEN TOP WITH BOLT ON TOP	
SCALE N.S.	PART NO. OC1505-64