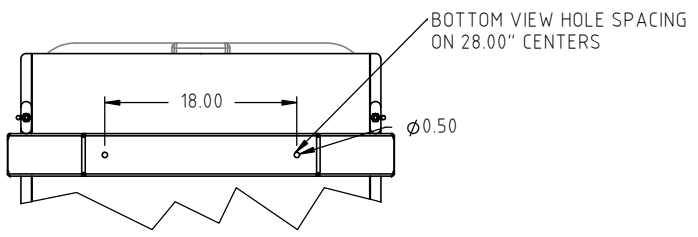
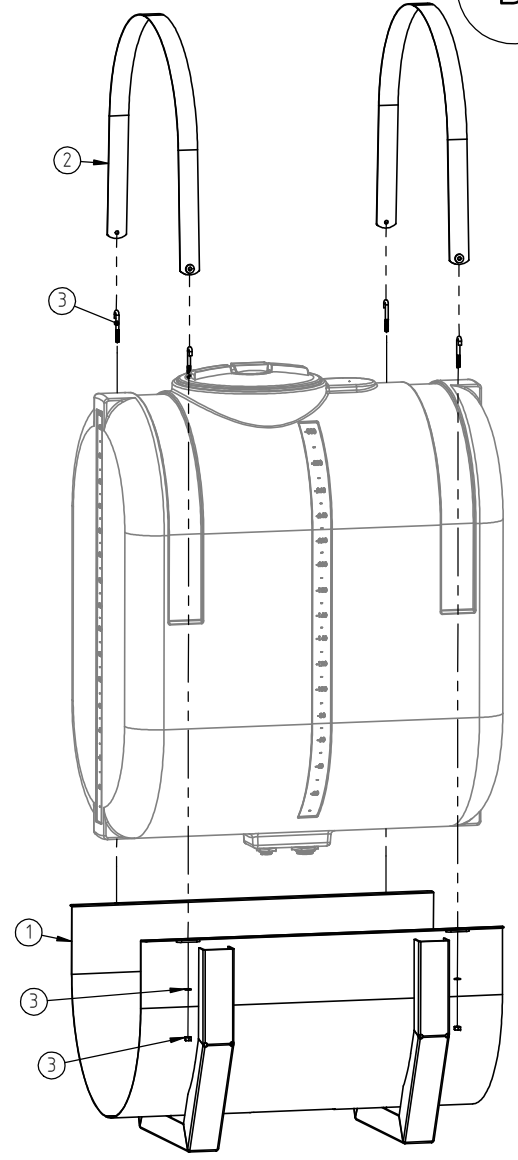
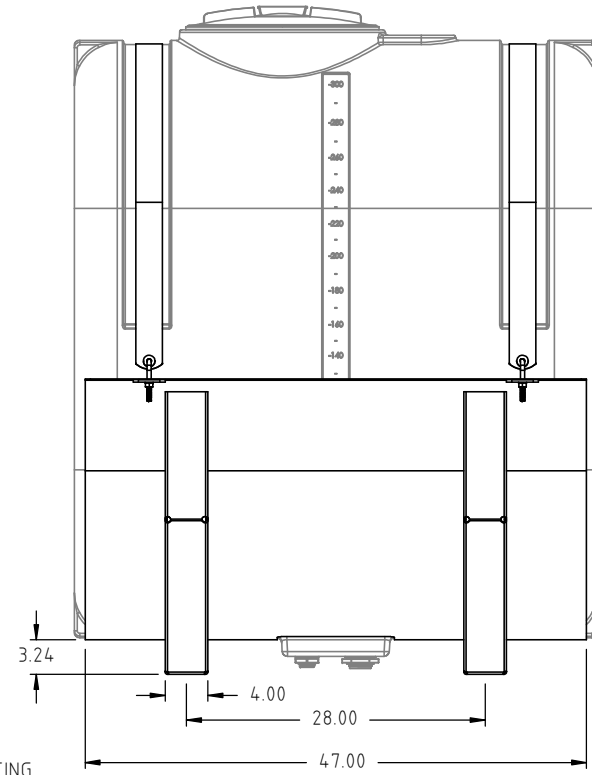
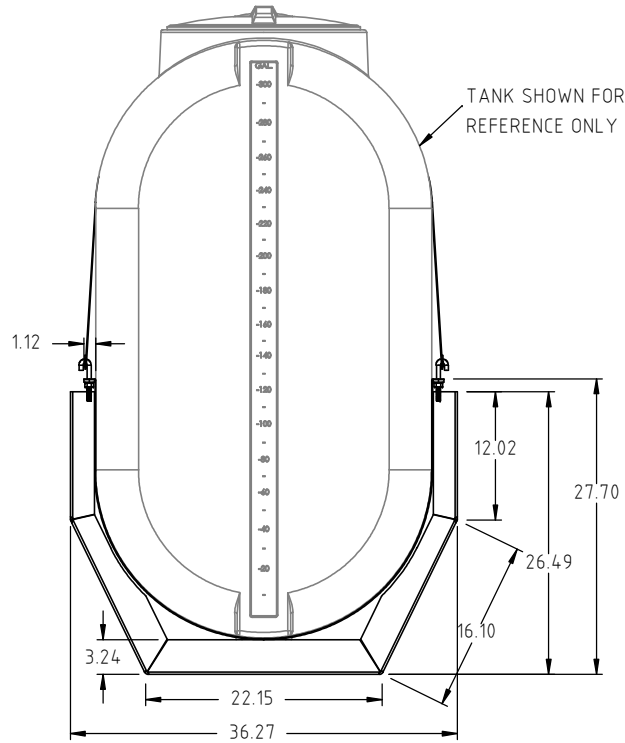


© DEN HARTOG INDUSTRIES, INC.

Copyright. All information furnished within this document, electronic file or design correspondence is the property of Den Hartog Industries, Inc. and shall not be used, disclosed to others or copied without the expressed written consent of Den Hartog Industries, Inc.

ITEM NO.	PART NUMBER	DESCRIPTION	QTY.
1	OT0300-CO	OT, CRADLE ONLY 300 GALL BLACK	1
2	OT0300-SBPS	OT, STEEL BAND 300 GAL SINGLE	2
3	BB3-8X3.75BAG-4	BOLT BAG, 3/8" X 3-3/4" J-BOLT	1
	J.375X3.75	J-BOLT, 3/8" X 3-3/4"	4
	11093	NUT, 3/8"HEX GRADE 2 ZINC	4
	SJ10937	WASHER, 3/8" FLAT ZINC	4

OT0300-C B



B	OT0300-CO PRINT SEPARATED FROM OT0300-C PRINT. OT0300-C WAS OT0300-C/OT0300-SBPS.	ADH 8/27/15	3121	DRAWN / DATE NVE 4/6/06	MATERIAL
A	REMOVE TOL. 1% @ 68° F	GWC 3/9/07		APPRD. / DATE ADH 11/20/07	
REV	DESCRIPTION	BY / DATE	CCN		
ALL DIMENSIONS ARE IN DECIMAL INCHES TOLERANCES UNLESS OTHERWISE SPECIFIED		THIRD ANGLE PROJECTION ANSI 14.5M		SHOT WEIGHT:	NOTES:
POLYETHYLENE		METAL DECIMAL ± .125" FRACTION ± 1/4" ANGLE ± 1°		SHIPPING WEIGHT: XXXX	
±1% @ 68° F				FINISH: N.A.	



Den Hartog
INDUSTRIES, INC.

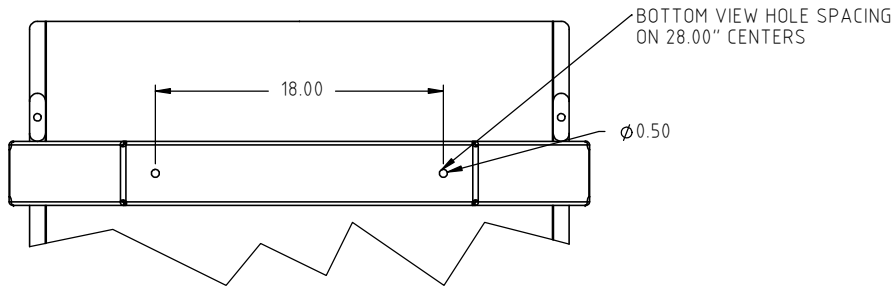
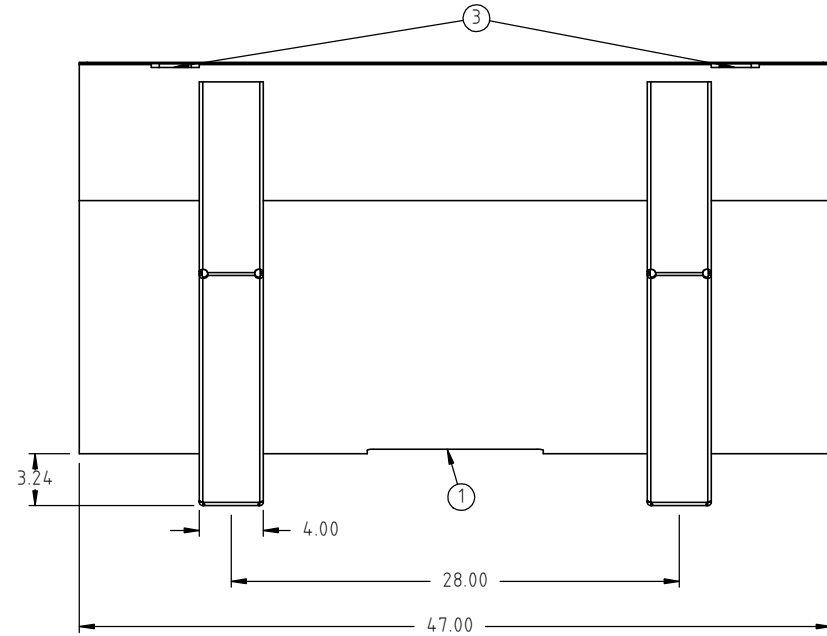
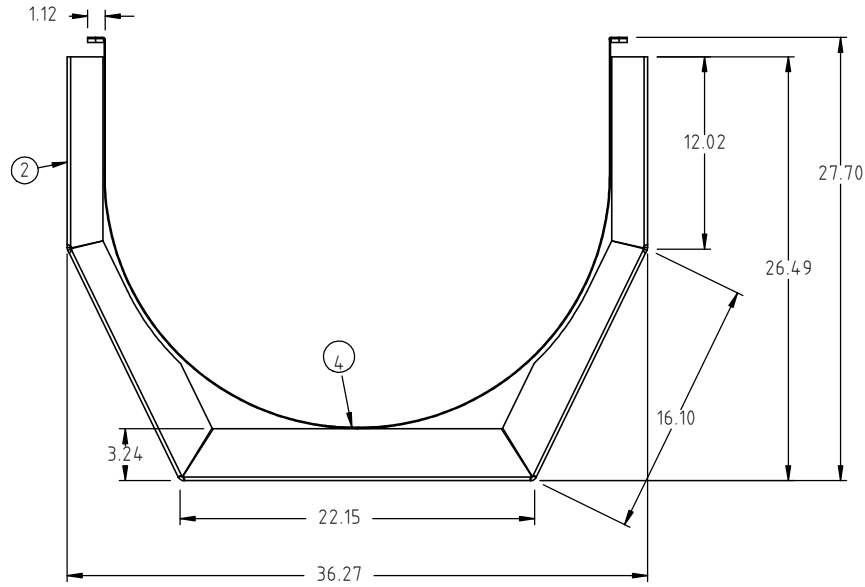
Ace Roto-Mold Injection Molding Blow Molding Sowjoy

4010 HOSPERS DRIVE S. BOX 425, HOSPERS, IOWA 51238-0425

DESCRIPTION	300 GALLON OVAL TANK CRADLE AND BANDS		
SCALE	N.S.	PART NO.	OT0300-C B

Copyright. All information furnished within this document, electronic file or design correspondence is the property of Den Hartog industries, Inc. and shall not be used, disclosed to others or copied without the expressed written consent of Den Hartog Industries, Inc.

ITEM NO.	PART NUMBER	DESCRIPTION	QTY.
1	19434	PAN	1
2	19435	SUPPORT	2
3	SJHZ0232C-4	STRAP SUPPORT	4
4	10357	LABEL, BARCODE 4" X 2"	1



REV	DESCRIPTION	BY / DATE	CCN	DRAWN / DATE ADH 8/25/15	MATERIAL
				APPROD. / DATE REH 8/27/15	
ALL DIMENSIONS ARE IN DECIMAL INCHES TOLERANCES UNLESS OTHERWISE SPECIFIED		THIRD ANGLE PROJECTION ANSI 14.5M		SHOT WEIGHT:	NOTES:
POLYETHYLENE		METAL DECIMAL $\pm .125$ " FRACTION $\pm 1/4$ " ANGLE $\pm 1^\circ$		SHIPPING WEIGHT:	
$\pm 1\%$ @ 68°F				FINISH: POWDER COAT, BLACK	



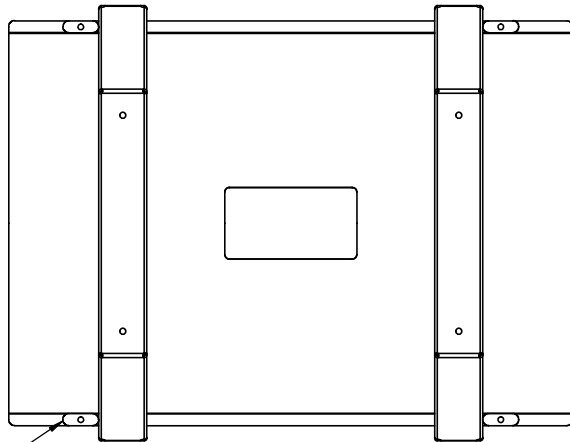
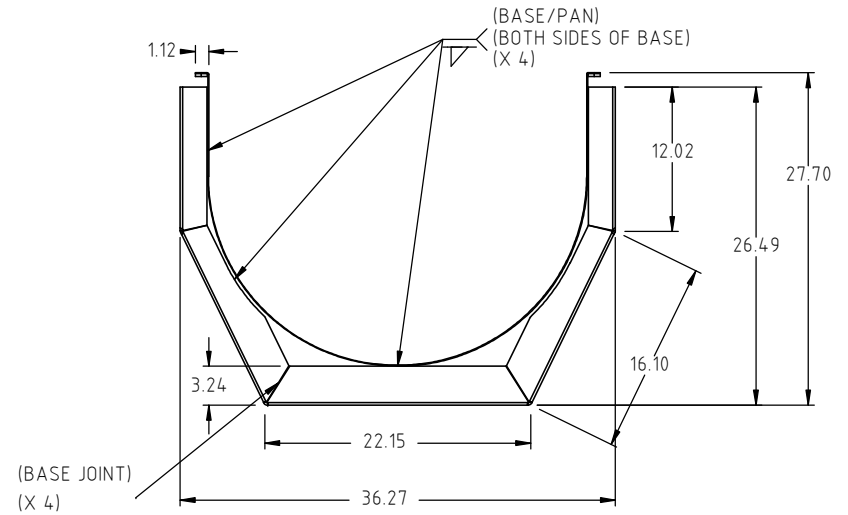
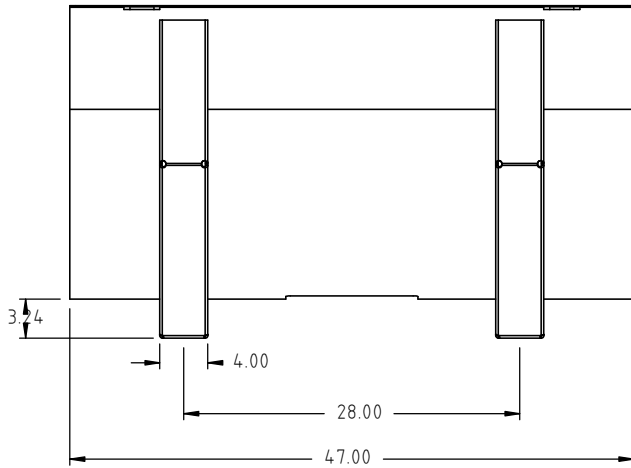
Den Hartog
INDUSTRIES, INC.

Ace Roto-Mold Injection Molding Blow Molding Sowjoy

4010 HOSPERS DRIVE S. BOX 425, HOSPERS, IOWA 51238-0425

DESCRIPTION 300 GALLON OVAL TANK CRADLE	
SCALE N.S.	PART NO. OT0300-CO

Copyright. All information furnished within this document, electronic file or design correspondence is the property of Den Hartog industries, Inc. and shall not be used, disclosed to others or copied without the expressed written consent of Den Hartog Industries, Inc.



(BOLT STRAP/PAN)
(4 CORNERS)(X 4)

				DRAWN / DATE ADH 8/25/15	MATERIAL
				APPRO. / DATE REH 8/27/15	
REV	DESCRIPTION	BY / DATE	CCN		
ALL DIMENSIONS ARE IN DECIMAL INCHES TOLERANCES UNLESS OTHERWISE SPECIFIED		THIRD ANGLE PROJECTION ANSI 14.5M		SHOT WEIGHT:	NOTES:
POLYETHYLENE		METAL DECIMAL ± .125" FRACTION ± 1/4" ANGLE ± 1°		SHIPPING WEIGHT:	
±1% @ 68°F				FINISH:	



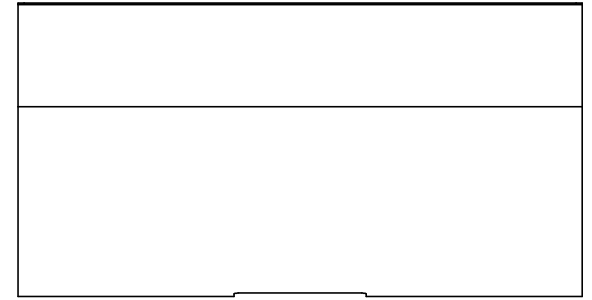
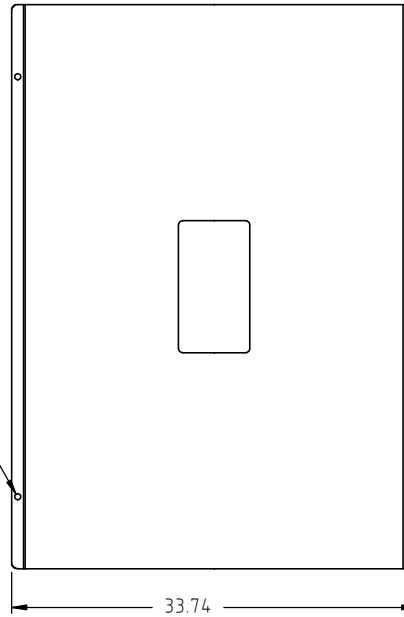
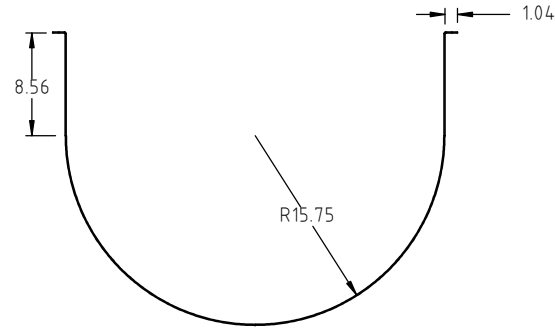
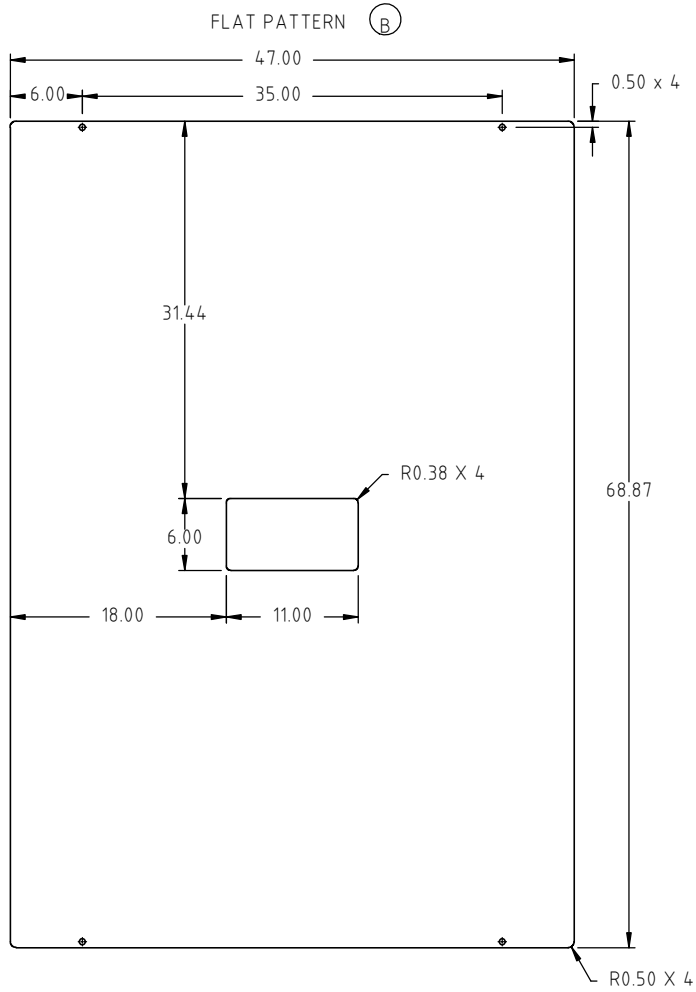
Den Hartog
INDUSTRIES, INC.

Ace Roto-Mold Injection Molding Blow Molding Sowjoy

4010 HOSPERS DRIVE S. BOX 425, HOSPERS, IOWA 51238-0425

DESCRIPTION	300 GALLON OVAL TANK CRADLE	
SCALE	N.S.	PART NO. OT0300-CO-WELDMENT

Copyright. All information furnished within this document, electronic file or design correspondence is the property of Den Hartog Industries, Inc. and shall not be used, disclosed to others or copied without the expressed written consent of Den Hartog Industries, Inc.



B	FLAT PATTERN ADDED.	ADH 8/27/15	3121	DRAWN / DATE NVE 4/7/06	MATERIAL 14 GA MILD STEEL
A	TOLERANCE WAS 1% @ 68° F	GWC 3/9/07		APPRD. / DATE ADH 11/5/07	
REV	DESCRIPTION	BY / DATE	CCN		
ALL DIMENSIONS ARE IN DECIMAL INCHES TOLERANCES UNLESS OTHERWISE SPECIFIED		THIRD ANGLE PROJECTION ANSI 14.5M		SHOT WEIGHT:	NOTES:
POLYETHYLENE		METAL DECIMAL ± .125" FRACTION ± 1/4" ANGLE ± 1°		SHIPPING WEIGHT:	
±1% @ 68° F				FINISH:	



Den Hartog
INDUSTRIES, INC.

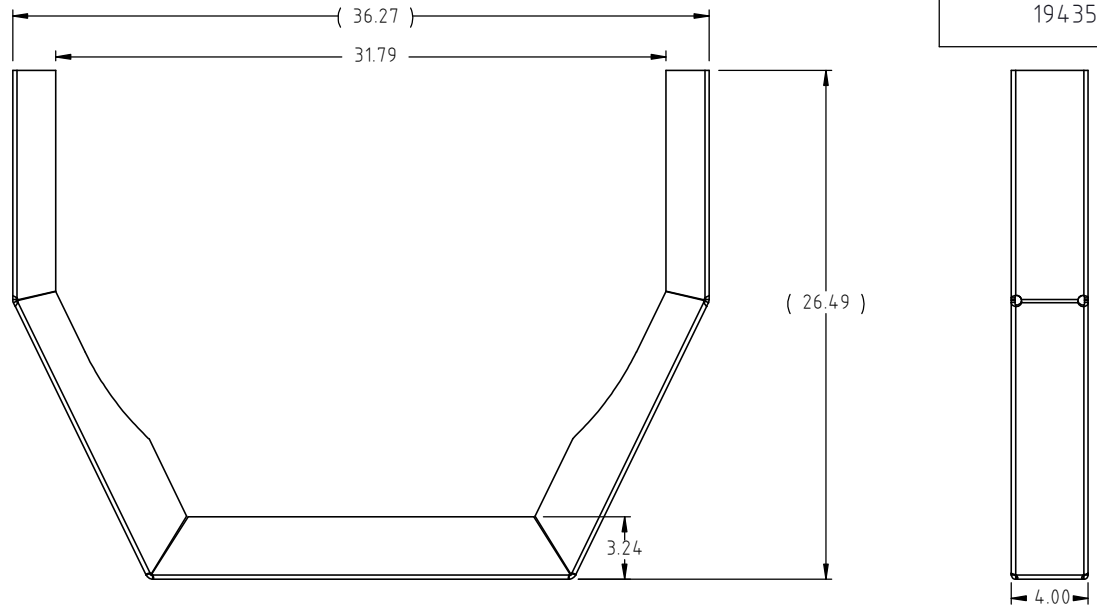
Ace Roto-Mold Injection Molding Blow Molding Sowjoy

4010 HOSPERS DRIVE S. BOX 425, HOSPERS, IOWA 51238-0425

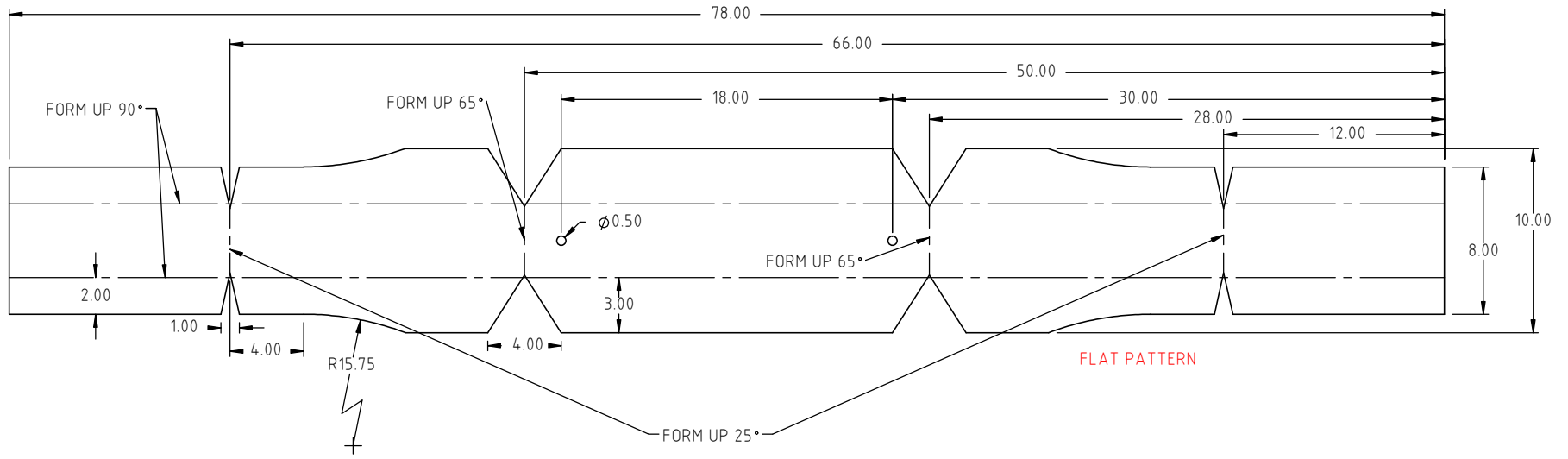
DESCRIPTION OT0300-C CRADLE PAN	
SCALE N.S.	PART NO. 19434

© DEN HARTOG INDUSTRIES, INC.

Copyright. All information furnished within this document, electronic file or design correspondence is the property of Den Hartog Industries, Inc. and shall not be used, disclosed to others or copied without the expressed written consent of Den Hartog Industries, Inc.



B



B	FORMED VIEW ADDED	ADH 8/27/15	3121	DRAWN / DATE NVE 4/6/06	MATERIAL 3/16" STEEL SHEET
A	TOLERANCE WAS 1% @ 68°F	GWC 3/9/07		APPRD. / DATE ADH 11/5/07	
REV	DESCRIPTION	BY / DATE	CCN		
ALL DIMENSIONS ARE IN DECIMAL INCHES TOLERANCES UNLESS OTHERWISE SPECIFIED		THIRD ANGLE PROJECTION ANSI 14.5M		SHOT WEIGHT:	NOTES:
POLYETHYLENE		METAL DECIMAL ± .125" FRACTION ± 1/4" ANGLE ± 1°		SHIPPING WEIGHT:	
±1% @ 68°F				FINISH:	



Den Hartog
INDUSTRIES, INC.

Ace Roto-Mold Injection Molding Blow Molding Sowjoy
4010 HOSPERS DRIVE S. BOX 425, HOSPERS, IOWA 51238-0425

DESCRIPTION 300 GALLON OVAL TANK CRADLE SUPPORT	
SCALE N.S.	PART NO. 19435