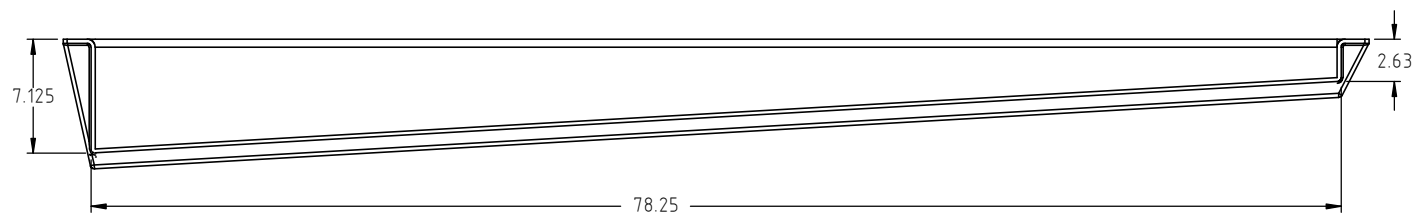
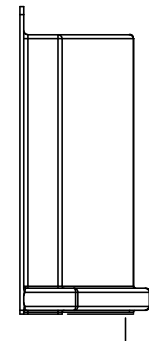
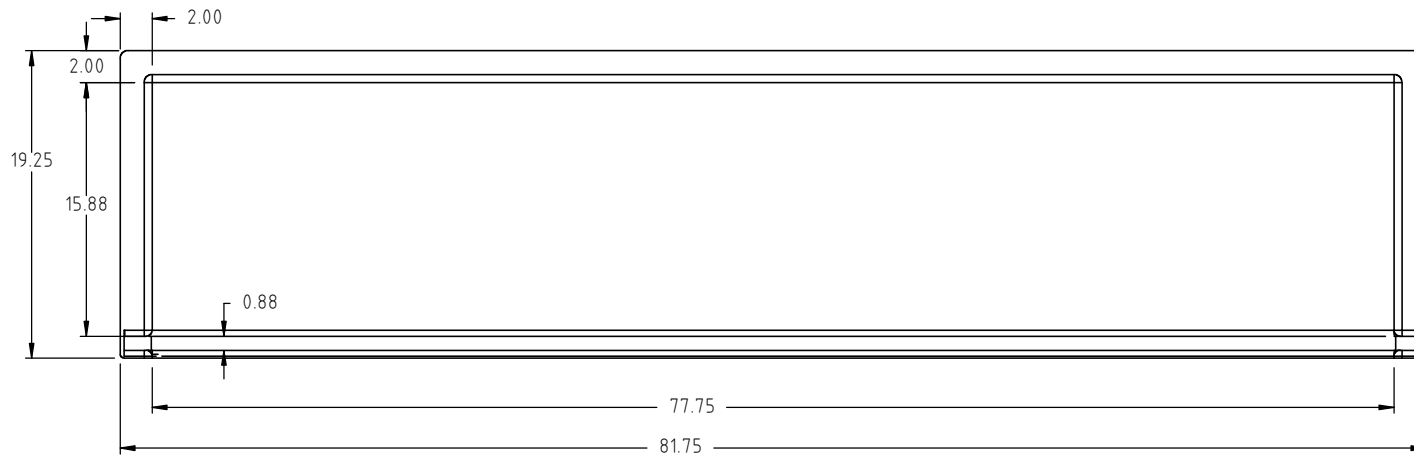
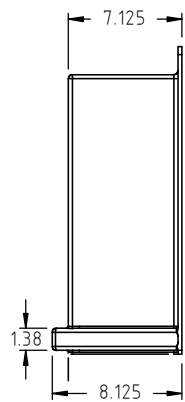

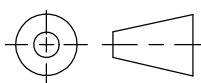


Copyright. All information furnished within this document, electronic file or design correspondence is the property of Den Hartog industries, Inc. and shall not be used, disclosed to others or copied without the expressed written consent of Den Hartog Industries, Inc.



(A) RIGHT AND LEFT POCKETS SOLD AS A PAIR (RIGHT SHOWN)

				DRAWN / DATE REH 10/15/98	MATERIAL M135	 <p><b>Den Hartog</b> INDUSTRIES, INC. Ace Roto-Mold Injection Molding Blow Molding Sowjoy 4010 HOSPERS DRIVE S. BOX 425, HOSPERS, IOWA 51238-0425</p>
A	16 LBS WAS 40 LBS, NOTE ADDED	ADH 10/8/12	2502	APPRD. / DATE GWC 5/15/07		
REV	DESCRIPTION	BY / DATE	CCN			
ALL DIMENSIONS ARE IN DECIMAL INCHES TOLERANCES UNLESS OTHERWISE SPECIFIED POLYETHYLENE		THIRD ANGLE PROJECTION ANSI 14.5M		SHOT WEIGHT: 40 LBS. MAKES 2 SHIPPING WEIGHT: 16 LBS. (A) FINISH:	NOTES: 1.) NOM. WALL = 0.250 2.) COLOR TO BE WHITE	DESCRIPTION 78" CURTAIN POCKET
±1% @ 68°F METAL DECIMAL ± .125" FRACTION ± 1/4" ANGLE ± 1°					SCALE N.S.	PART NO. RM-10125